



Install Guide

Sled Dynamometer Hub Replacement

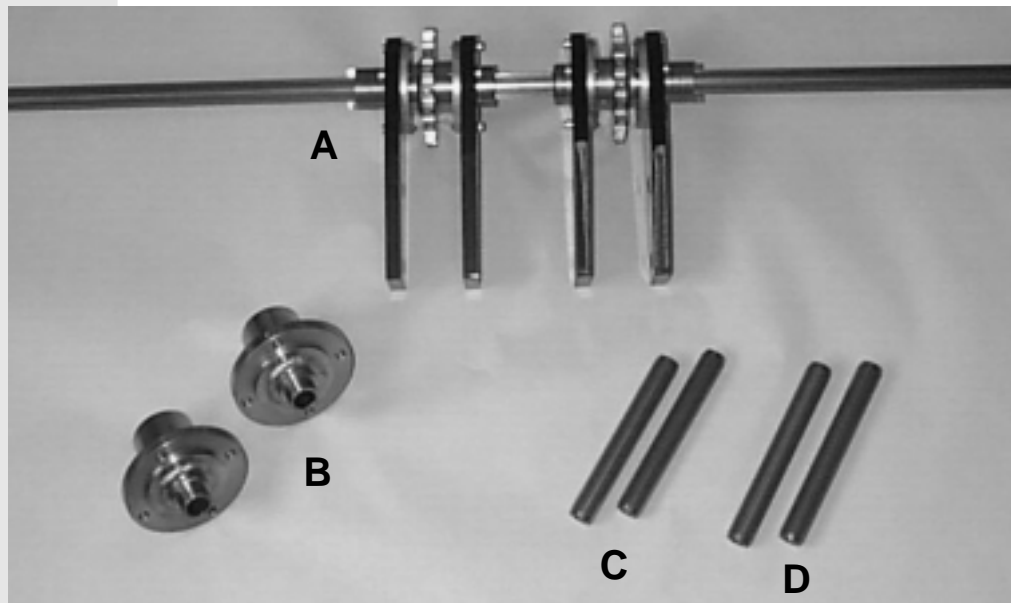
Dynojet® Research Inc.

Contents

Dynojet Sled Dynamometer Hub Replacement

Be sure that your kit includes the following components. If there are parts missing, call Dynojet Research at (406) 388-5255.

- A - (1) Dyno Hubs / Shaft Assembly
- B - (2) Outside Hubs for Driver Set (Modified)
- C - (2) "Red" Shafts
- D - (2) "Green" Shafts



Install Guide

Dynojet Sled Dynamometer Hub Replacement

The following steps will guide you through the replacement of the hubs on your sled dynamometer.

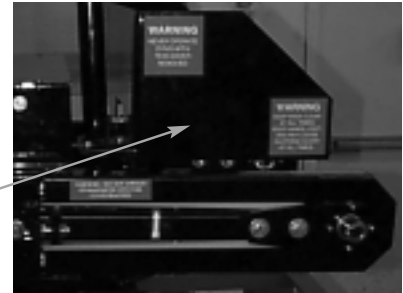
Warning:

Do Not remove the parts from the spline shaft. The hubs are setup and ready to install.

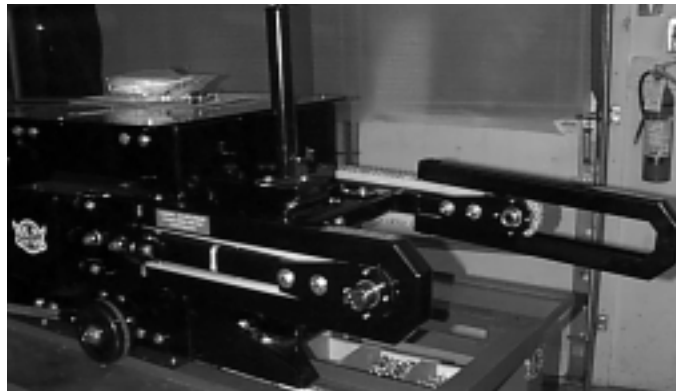
Step 1

Remove the guards.

- Remove the track guard.



- Loosen the button head cap screws on the guards.
- Pull the guards off the arms.



Note:

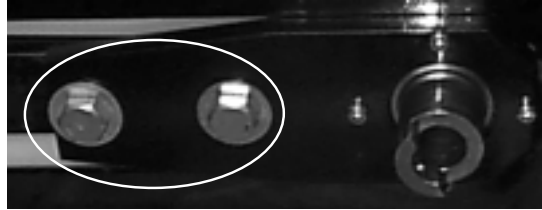
Do Not Loosen the chain tensioner bolts !



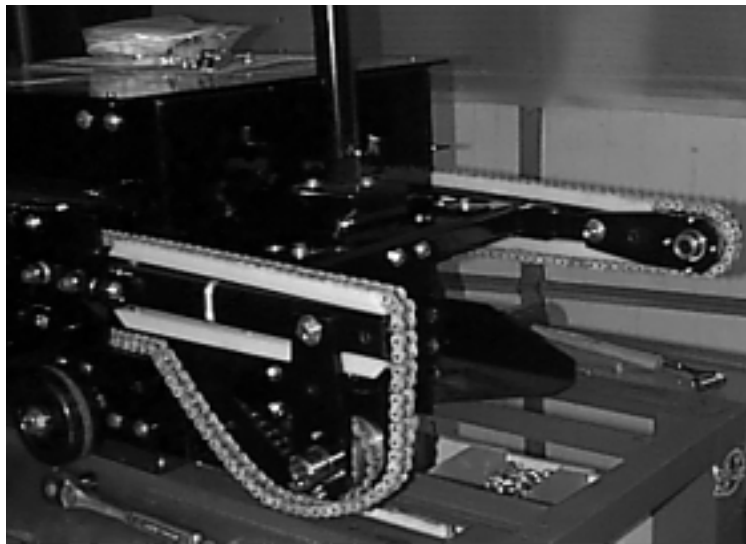
Step 2

Remove the Sprocket Ends containing the old hubs.

- Loosen the $1/2" \times 4 1/2"$ bolts on the front end of the arms.

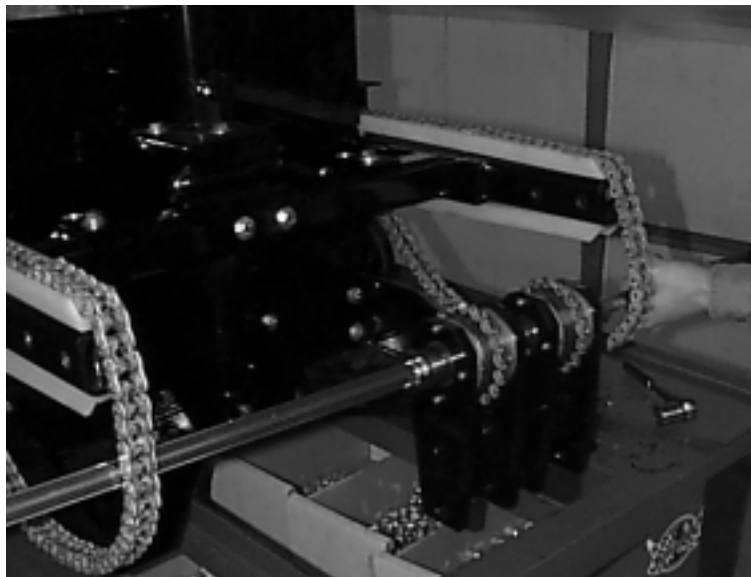


- Remove the front bolts and swing the arms down.
- Remove the rear bolts and remove the arms.



Step 3

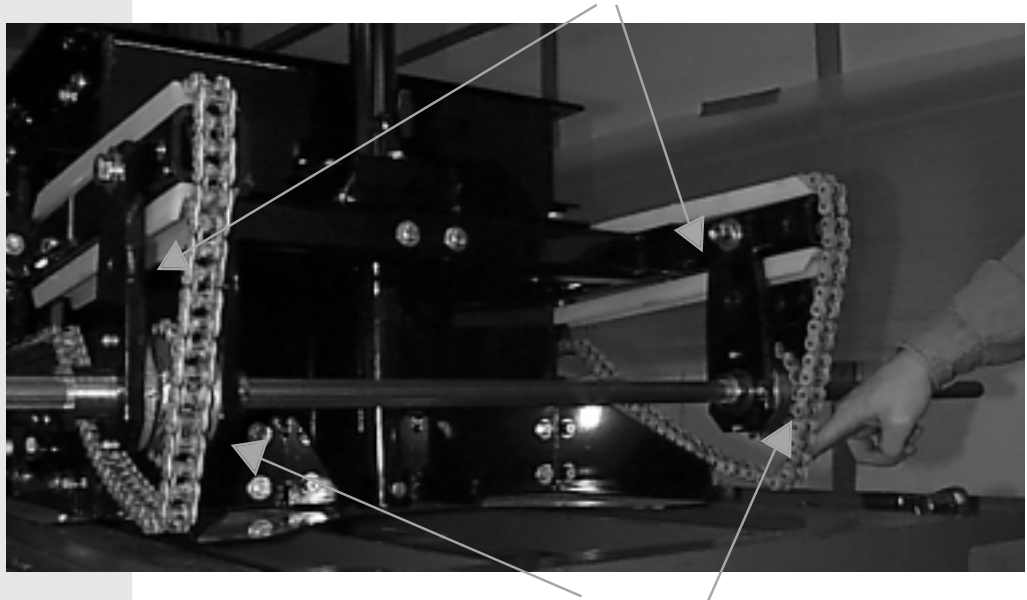
Place the new sprocket ends in the hanging chains.



Step 4

Attach the new sprocket ends to the dyno.

- Put one $\frac{1}{2}$ " x $4\frac{1}{2}$ " bolt with a $\frac{7}{16}$ " flat washer through each sprocket end and the rear hole in the dyno arms. Fasten loosely.
- Allow the sprocket ends to hang as in the picture below.



- Pull the chains straight down and tightly against the hanging sprockets.
- Swing both sprocket ends on the shaft up and put in the front $\frac{1}{2}$ " x $4\frac{1}{2}$ " bolts with $\frac{7}{16}$ " flat washers.



Important:

Make sure that the gears on the sprockets are in the chain at the same point on both sides!!

- Use a $\frac{7}{16}$ " flat washer, $\frac{1}{2}$ " lock washer and $\frac{1}{2}$ " locking nut on each bolt and snug down.
- Rotate the shaft until it slides easily side to side.



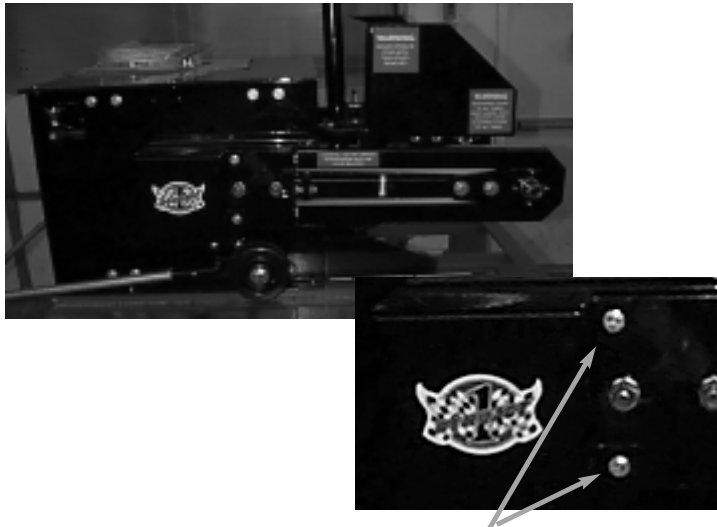
- Tighten all four bolts to 70 ft. lbs.
- Make sure that the shaft still slides easily from side to side between the sprocket ends.
- Remove the shaft.

Step 5

Check chain alignment in plastic chain guides. Tap guides as needed (with a rubber hammer) to center them with the chain.

Step 6

Replace the metal arm guards and the track guard.



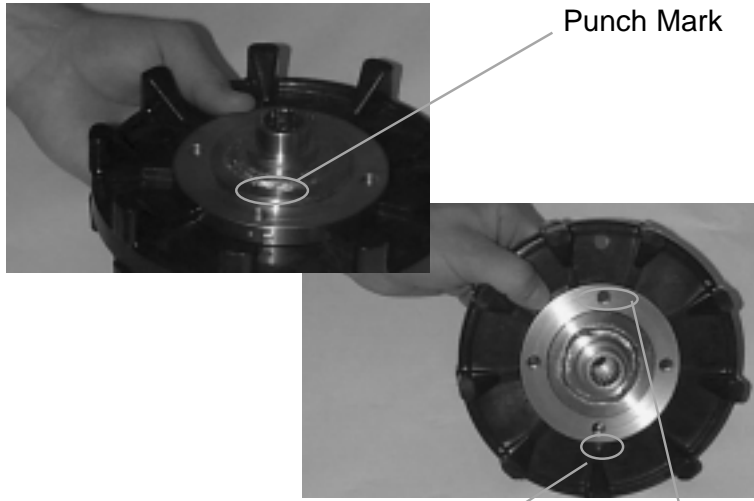
Note:

The bolts on the back bearing cover may need to be loosened in order to line up the holes for the button head cap screws on the arm guards.

Warning:

When replacing the Outside Driver Hub, notice a punch mark on the edge of the hub. This punch mark should be directly opposite of the alignment hole in the Outside Driver. Be sure that when you install the new Outside Driver Hub and Outside Driver that these holes are directly opposite of each other.

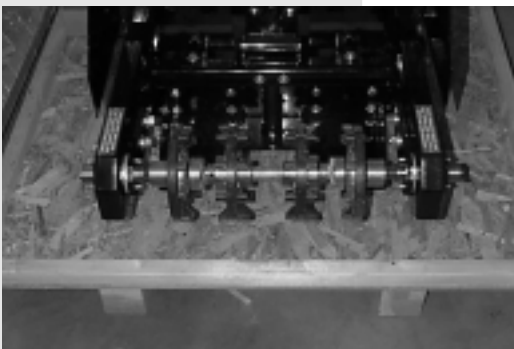
Improper alignment of the outside Driver Hub and Driver will not allow you to assemble the driver set correctly.



Be sure that the punch mark and alignment hole are directly opposite of each other !!

Step 7

Assemble the driver set and then install it on the dyno. If the driver set is assembled properly, the shafts should slide in without complication.



- *If you have any questions, or need technical assistance, call (406) 388-5255.*