

Thank you for purchasing this Dynojet kit. This kit has been developed for a motorcycle which is set to the parameters listed at the right in the "Stage" description. If your motorcycle does not meet any of these parameters please check with Dynojet before installation. For technical assistance contact your Dynojet distributor or call Dynojet U.S.A. (800)-992-4993

2191 Mendenhall Dr. Suite 105
 North Las Vegas, NV 89031
 TEL: 702-399-1423
 FAX: 702-399-1431
 8am-5pm Pacific Time
 Monday through Friday

Website Address
<http://www.dynojet.com>

The manufacturer and seller make no warranties express or implied which extend beyond the description of the goods contained herein. Any description of this product is for the purpose of identifying it and shall not be deemed to create an express warranty.



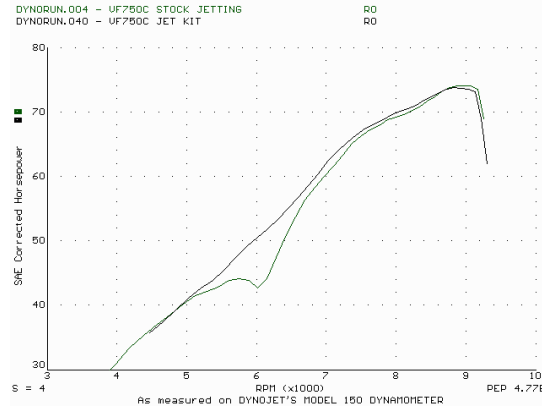
1119.003

U.S Models Only

*1982-86 Honda VF700-750
 Magna*

Stage 1

For mildly tuned machines using the stock air-box, with stock or K&N filter. May also be used with a good aftermarket exhaust system
 K&N filter #HA-1210



This graph shows a typical gain with a Dynojet jet kit.

WARNING

**NO SMOKING!
 NO OPEN FLAME!
 WHILE INSTALLING
 YOUR DYNOJET KIT**

Parts List

| | | |
|---|-------------------|----------|
| 4 | Main Jet | DJ120 |
| 4 | Main Jet | DJ124 |
| 4 | Fuel Needles | DNO103 |
| 4 | E-Clips | DE0001 |
| 4 | Adjusting Washers | DW0001 |
| 1 | Slide Drill | DD #7/64 |
| 1 | Plug Drill | DD #5/32 |
| 1 | Screw | DS0001 |

STAGE ONE INSTRUCTIONS

DYNOJET

1119.003

1. Remove the vacuum slides from the carbs. Remove the stock needles and spacers, noting order of assembly (Fig. A). Using the drill bit (DD #7/64) enlarge the slide lift holes (Fig. A). The picture may not show your slide exactly. Enlarge the stock slide lift hole(s) only. **Do not** drill any new holes or the needle hole.

2. Install the Dynojet needles on groove #3 from the top. Use all stock spacers (Fig. A). Install the small Dynojet washers above the E-clip. After installing the slides in the carbs be sure to check slide movement manually.

3. Remove the stock main jets and replace with the Dynojet main jets provided. If you are using the stock exhaust install the DJ120 main jets. If you are using an aftermarket exhaust or slip-on with a high flowing baffle use the DJ124 main jets. If the Dynojet main jet is not within 6 points of your stock jet, install the main jet supplied that brings you closest to your stock jet, lean or rich. Be sure that the jet you are changing is the main jet.

4. Locate the fuel mixture plug (Fig. B). If you see a screw head at Fig. B then proceed to the adjusting procedure. With the 5/32 drill bit provided carefully drill through the plug. **NOTE:** The mixture screw is directly underneath this plug, be ready to pull back on the drill the instant you break through. Use screw provided to secure and remove this plug. Carefully turn the mixture screws clockwise until lightly seated, then back out 2.5 turns.

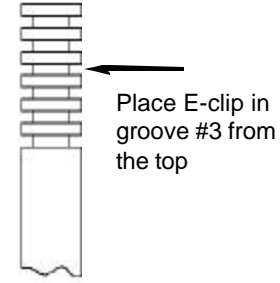


Fig. A

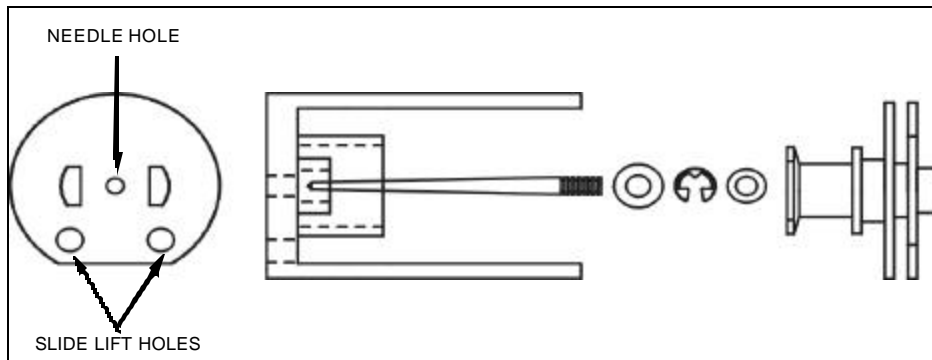


Fig. B

