

Thank you for purchasing this Dynojet kit. This kit has been developed for a motorcycle which is set to the parameters listed at the right in the "Stage" description. If your motorcycle does not meet any of these parameters please check with Dynojet before installation. For technical assistance contact your Dynojet distributor or call Dynojet U.S.A. (800)-992-4993

2191 Mendenhall Dr. Suite 105  
 North Las Vegas, NV 89031  
 TEL: 702-399-1423  
 FAX: 702-399-1431  
 8am-5pm Pacific Time  
 Monday through Friday

Website Address  
<http://www.dynojet.com>

The manufacturer and seller make no warranties express or implied which extend beyond the description of the goods contained herein. Any description of this product is for the purpose of identifying it and shall not be deemed to create an express warranty.



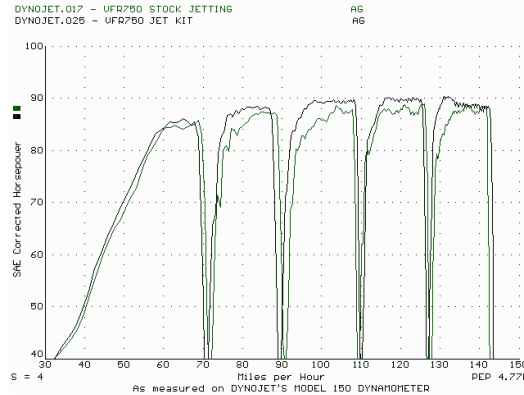
**1139HA.001**

High Altitude Only

*1990-93 Honda VFR750F*

**Stage 1**

For mildly tuned machines using the stock airbox, with stock or K&N filter. May also be used with a good aftermarket exhaust. K&N Filter #HA-0003



*This graph shows a typical gain with a Dynojet jet kit.*

# WARNING

**NO SMOKING!  
 NO OPEN FLAME!  
 WHILE INSTALLING  
 YOUR DYNOJET KIT**

Parts List		
4	Main Jets	DJ116
4	Main Jets	DJ120
4	Fuel Needles	DNO307
4	Adjusting Washers	DW0001
4	E-Clips	DE0001

## STAGE ONE INSTRUCTIONS

1. Remove the vacuum slide from the carbs. Remove the stock needles & spacers, noting the order of assembly. Locate the slide lift holes using (Fig. A). Use a 5 minute epoxy and plug one slide lift hole in each slide. **Only plug one hole in each slide, but the same hole in every slide.**
2. Install the Dynojet needles on groove #4, using all stock spacers. Install the Dynojet washers above the E-clip.
3. Remove the stock main jets and replace with the Dynojet main jets provided. If you are running the stock exhaust use the DJ116 main jets, if you are running an aftermarket header or slip-on with high flowing baffle, use the DJ120 main jets. Be sure that the jet you are changing is the main jet.
4. Locate the fuel mixture screw (Fig. B), carefully turn the mixture screw clockwise until lightly seated, turn out 2-1/2 turns.

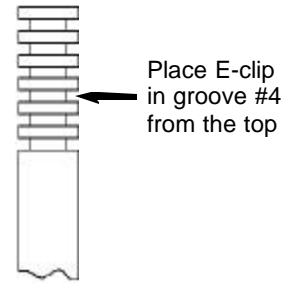


Fig. A

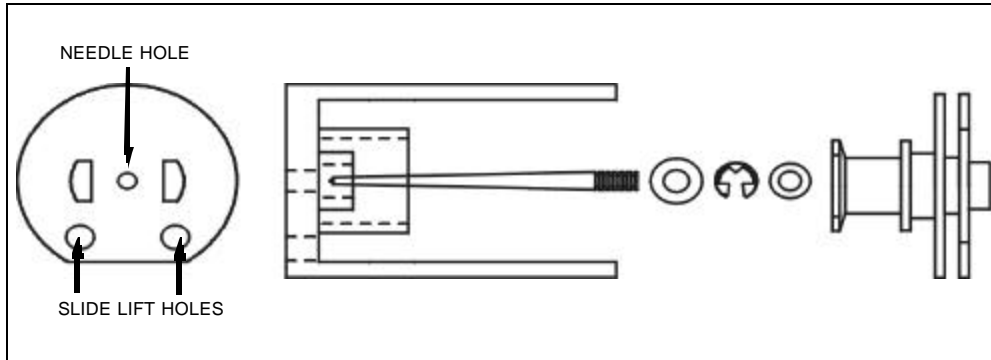


Fig. B

