

Thank you for purchasing this Dynojet kit. This kit has been developed for a motorcycle which is set to the parameters listed at the right in the "Stage" description. If your motorcycle does not meet any of these parameters please check with Dynojet before installation. For technical assistance contact your Dynojet distributor or call Dynojet U.S.A. (800)-992-4993

2191 Mendenhall Dr. Suite 105
 North Las Vegas, NV 89031
 TEL: 702-399-1423
 FAX: 702-399-1431
 8am-5pm Pacific Time
 Monday through Friday

Website Address
<http://www.dynojet.com>

The manufacturer and seller make no warranties express or implied which extend beyond the description of the goods contained herein. Any description of this product is for the purpose of identifying it and shall not be deemed to create an express warranty.



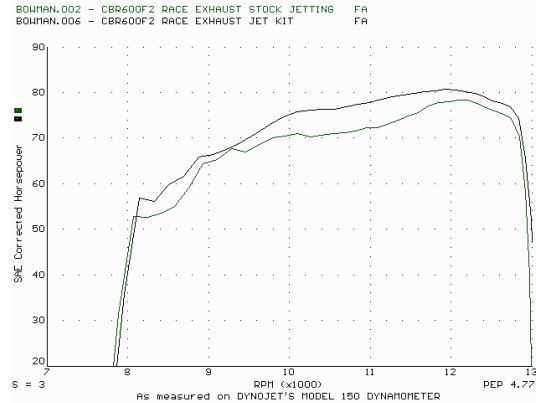
1140HA.001

High Altitude Only

1991-94 Honda CBR600F2

Stage 1

For mildly tuned machines using the stock airbox, with stock or K&N filter. May also be used with a good aftermarket exhaust system
 K&N filter #HA-6091



This graph shows a typical gain with a Dynojet jet kit.

WARNING

**NO SMOKING!
 NO OPEN FLAME!
 WHILE INSTALLING
 YOUR DYNOJET KIT**

Parts List

4	Main Jets	DJ120
4	Main Jets	DJ124
4	Fuel Needles	DNO307
4	Adjusting Washers	DW0001
4	E-Clips	DE0001
4	Needle shrouds	DNJT02
1	Glue	DA0001
4	Slide Springs	DSP007
1	Shroud Tool	DT007
1	Idle Adjustment Tool	DT009

STAGE ONE INSTRUCTIONS

1. Remove the vacuum slide from the carbs. Remove the stock needles & spacers, noting the order of assembly (Fig. A).
2. Locate the Dynojet needle shrouds (DNJT02) supplied. With the cutaway facing up and to the engine (Fig. B), use the shroud tool provided (DT007) to press over stock needle jet. Before pressing down, add a touch of glue to the outer base of the stock needle jet, then press down. Check to make sure there is no excess glue visible.
3. Install the Dynojet needles on groove #2, using all stock spacers. Install the Dynojet washer above the E-clip.
4. Install the Dynojet springs in place of the stock springs, making sure springs are aligned properly.
5. Remove the stock main jets and replace with the Dynojet mains provided. Use the DJ120 main jets with stock exhaust. Use the DJ124 main jets with a high flowing aftermarket exhaust. Be sure that the jets you are changing are the main jets.
6. Locate the fuel mixture tab underneath the carbs on the engine side (Fig.C). Carefully turn mixture tabs clockwise until they seat, turn out 1-1/2 turns.

DYNOJET
1140HA.001

Place E-clip
in groove #2
from the top



Fig. C

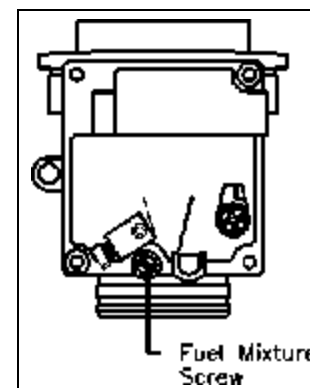


Fig. A

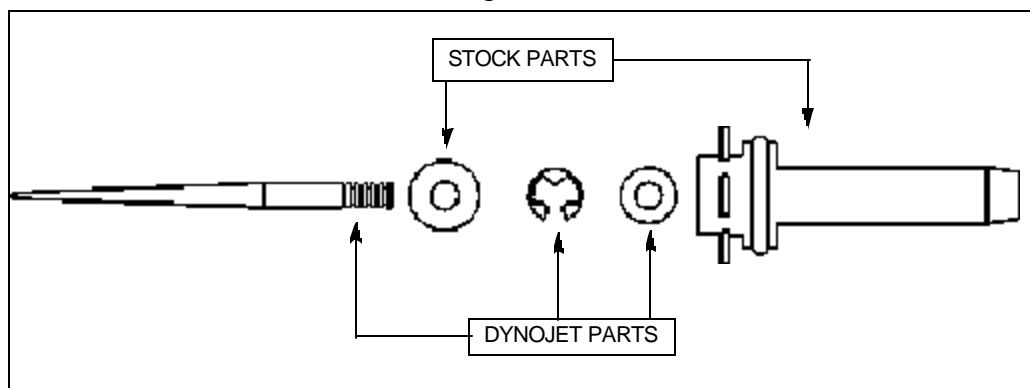


Fig. B

