

Thank you for purchasing this Dynojet kit. This kit has been developed for a motorcycle which is set to the parameters listed at the right in the "Stage" description. If your motorcycle does not meet any of these parameters please check with Dynojet before installation. For technical assistance contact your Dynojet distributor or call Dynojet U.S.A. (800)-992-4993



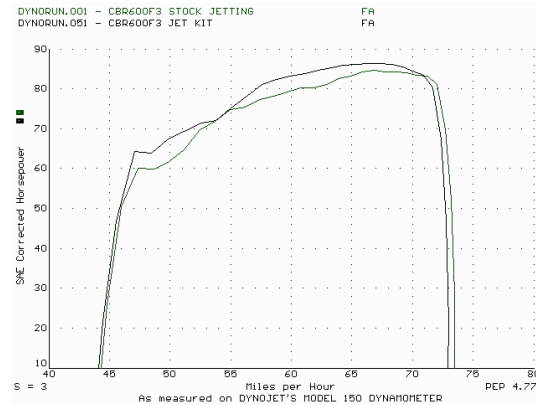
1157HA.003

High Altitude Only

1995-98 Honda CBR600F3

Stage 1

For mildly tuned machines using the stock airbox, with stock or K&N filter. May also be used with a good aftermarket exhaust system
K&N filter #HA-6095



This graph shows a typical gain with a Dynojet jet kit.

WARNING

**NO SMOKING!
NO OPEN FLAME!
WHILE INSTALLING
YOUR DYNOJET KIT**

2191 Mendenhall Dr. Suite 105
North Las Vegas, NV 89031
TEL: 702-399-1423
FAX: 702-399-1431
8am-5pm Pacific Time
Monday through Friday

Website Address
<http://www.dynojet.com>

The manufacturer and seller make no warranties express or implied which extend beyond the description of the goods contained herein. Any description of this product is for the purpose of identifying it and shall not be deemed to create an express warranty.

Parts List

| | | |
|---|----------------------|--------|
| 2 | Main Jets | DJ126 |
| 2 | Main Jets | DJ128 |
| 2 | Main Jets | DJ130 |
| 2 | Main Jets | DJ132 |
| 2 | Main Jets | DJ134 |
| 2 | Main Jets | DJ136 |
| 4 | Fuel Needles | DNO307 |
| 1 | Slide Drill | DD #32 |
| 4 | Adjusting Washers | DW0001 |
| 4 | E-Clips | DE0001 |
| 4 | Slide Springs | DSP008 |
| 1 | Idle Adjustment Tool | DT009 |

STAGE ONE INSTRUCTIONS

DYNOJET
1157HA.003

1. Remove the vacuum slide from the carbs. Remove the spring from the slide. Thread one of the slide cover screws into the center of the needle retainer (Fig. A) and pull up gently. Remove the stock needles & spacers, noting the order of assembly (Fig. B).
2. Locate your slide lift holes. Drill the slide lift holes with the slide drill (DD#32) provided (Fig. D).
3. Install the Dynojet needles on groove #2, using all stock spacers (Fig. B). Install the Dynojet washers above the E-clip. Install the stock spring retainers with the Dynojet springs.
4. Remove the stock main jets and replace with the Dynojet main jets provided. If you are running the stock exhaust install the DJ126 main jets in the outside two carburetors and the DJ128 main jets in the inner carburetors. If you are running an aftermarket header or slip-on with high flowing baffle, use the DJ130 main jets in the outside two carburetors and the DJ132 main jets in the inner carburetors. When using Dynojet filter use the aftermarket exhaust main jets with stock exhaust. When using the K&N filter with an aftermarket exhaust use the DJ134 main jets in the outer two carburetors and the DJ136 main jets in the inner two carburetors. Be sure that the jets you are changing are the main jets.
5. Locate the fuel mixture tab (Fig. C) Using the tool supplied, carefully turn mixture tabs clockwise until they seat, turn out 1 turn or where you find your best idle.

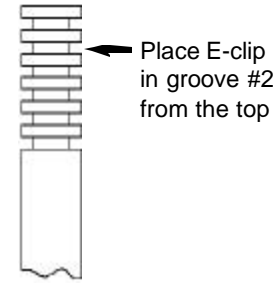


Fig. A

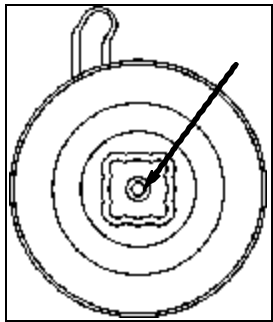


Fig. B

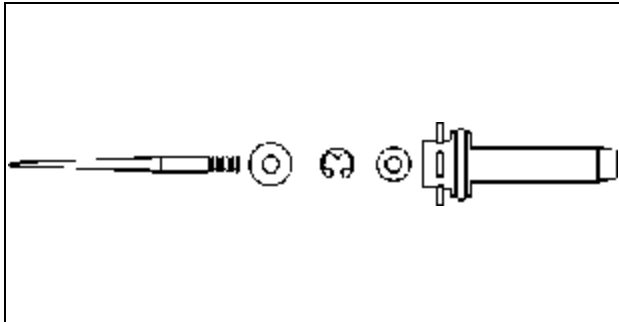


Fig. C

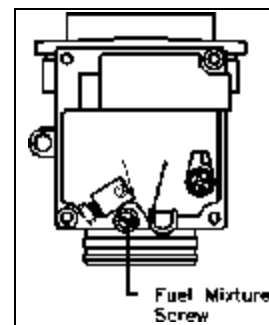


Fig. D

