

Thank you for purchasing this Dynojet kit. This kit has been developed for a motorcycle which is set to the parameters listed at the right in the "Stage" description. If your motorcycle does not meet any of these parameters please check with Dynojet before installation. For technical assistance contact your Dynojet distributor or call Dynojet U.S.A. (800)-992-4993

2191 Mendenhall Dr. Suite 105
 North Las Vegas, NV 89031
 TEL: 702-399-1423
 FAX: 702-399-1431
 8am-5pm Pacific Time
 Monday through Friday

Website Address
<http://www.dynojet.com>

The manufacturer and seller make no warranties express or implied which extend beyond the description of the goods contained herein. Any description of this product is for the purpose of identifying it and shall not be deemed to create an express warranty.



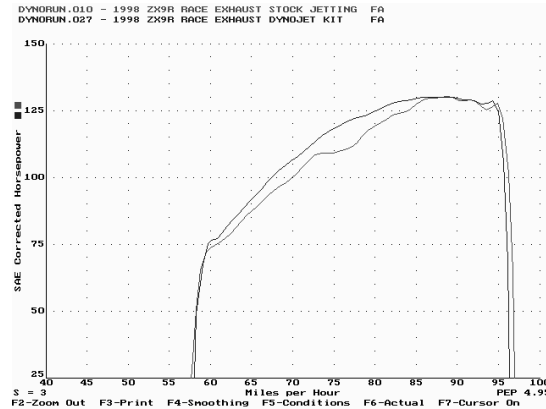
2192CA.001

California Models Only

2002-2003 Kawasaki ZX-9R

Stage 1

For mildly tuned machines using the stock air-box, with stock or K&N filter. May also be used with a good aftermarket exhaust system
 K&N filter # N/A



This graph shows a typical gain with a Dynojet jet kit.

WARNING

**NO SMOKING!
 NO OPEN FLAME!
 WHILE INSTALLING
 YOUR DYNOJET KIT**

Parts List

4	Main Jets	CJ142
4	Main Jets	CJ146
4	Main Jets	CJ150
4	Main Jets	CJ155
4	Main Jets	CJ160
4	Fuel Needles	DNO119
8	Adjusting Washers	DW0001
4	E-clips	DE0001
4	Shrouds	DNJT07
1	Shroud Tool	DT007
1	Slide Drill	DD #51
1	Screw	DS0001
1	Plug Drill	DD #5/32

STAGE ONE INSTRUCTIONS

1. Remove vacuum slides from carbs. Remove stock needles and spacers, noting order of assembly (Fig.A).
2. Locate the Dynojet needle shrouds (DNJT07) provided. With cutaway facing up and towards the engine use the shroud tool provided (DT007) to press over the stock needle jet (Fig. D).
3. Using the drill bit provided (DD #51) drill an auxiliary slide lift hole in the position shown in Fig. B. By drilling this auxiliary hole you will get the optimum performance out of this kit. If for any reason you need to go back to stock use JB weld or a similar product to fill up this hole.
4. Install Dynojet needles on groove #3 from the top. Use all stock spacers (Fig. A). Install the small Dynojet washers above the E-clip (2 per needle). After installing the slides in carbs be sure to check slide movement manually.
5. Remove the stock main jets and replace with Dynojet main jets provided. If you are running the stock exhaust install the CJ150 main jets. If you are running an aftermarket exhaust or slip-on with a high flow baffle use the CJ155 main jets. Be sure that the jets you are changing are the main jets.
6. Locate the fuel mixture plug (Fig. C). If you see a screw head at Fig. C proceed to adjusting procedure. With the 5/32 drill bit provided carefully drill through the plugs.
NOTE: The mixture screw is directly underneath this plug, be ready to pull back on the drill the instant you break through. Use screw provided to secure and remove this plug. Carefully turn mixture screws clockwise until lightly seated, then back out 1.5 turns.

DYNOJET
2192CA.001

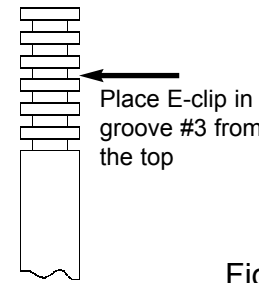


Fig. D

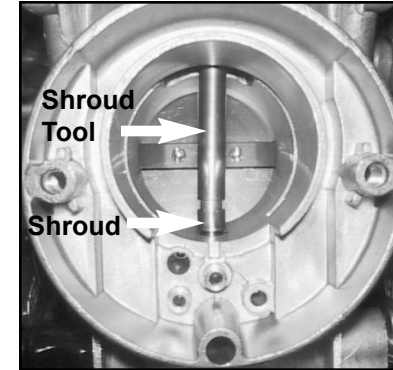


Fig. C

Fig. A

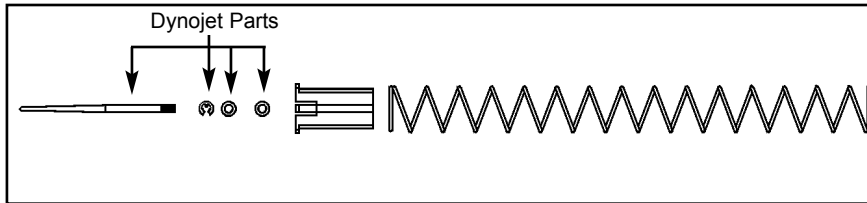
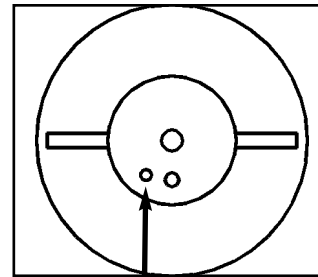


Fig. B



Mixture Screw Location

