

Thank you for purchasing this Dynojet kit. This kit has been developed for a motorcycle which is set to the parameters listed at the right in the "Stage" description. If your motorcycle does not meet any of these parameters please check with Dynojet before installation. For technical assistance contact your Dynojet distributor or call Dynojet U.S.A. (800)-992-4993

2191 Mendenhall Dr. Suite 105
 North Las Vegas, NV 89081
 TEL: 702-399-1423
 FAX: 702-399-1431
 8am-5pm Pacific Time
 Monday through Friday

Website Address
<http://www.dynojet.com>

The manufacturer and seller make no warranties express or implied which extend beyond the description of the goods contained herein. Any description of this product is for the purpose of identifying it and shall not be deemed to create an express warranty.



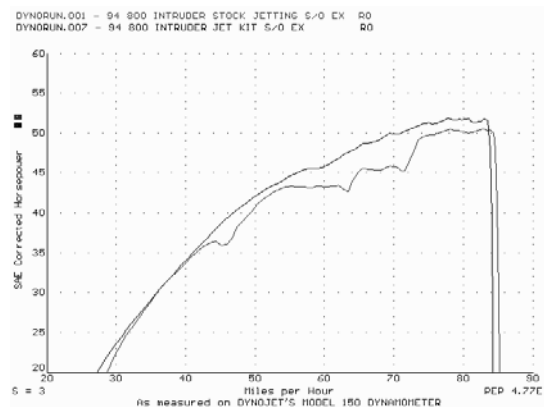
3126HA.001

High Altitude Only

1987-2008 Suzuki VS1400 / S83
 Intruder

Stage 1

For mildly tuned machines using the stock airbox, with stock filter. May also be used with a good aftermarket exhaust system



This graph shows a typical gain with a Dynojet jet kit.

WARNING

**NO SMOKING!
 NO OPEN FLAME!
 WHILE INSTALLING
 YOUR DYNOJET KIT**

Parts List

2	Fuel Needles	DNO361C
2	E-clips	DE0001
2	Adjusting Washers	DW0001
1	Slide Drill	DD 7/64
1	Plug Drill	DD 5/32
1	Screw	DS0001

STAGE ONE INSTRUCTIONS

NOTE: It is not necessary to remove the carburetors to install this kit.

1. Remove the vacuum slides from the carbs one at a time. **NOTE:** The slides are different from the front to the rear cylinder. Remove the stock needles and spacers, noting the order of assembly (Fig. A). Using the DD #32 slide drill provided to enlarge the slide lift hole. **Do not drill the needle hole.**

2. Use the stock main jets.

3. Install the Dynojet needles on groove #3. Use all stock spacers (Fig. A). Install the small Dynojet washers above the e-clip. After installing the slides in the carbs be sure to check slide movement manually.

4. Locate the fuel mixture plug (Fig. B). If you see a screw head at Fig. B proceed to adjusting procedure. With the DD #5/32 drill bit provided carefully drill through the plugs. **NOTE:** The mixture screw is directly underneath this plug, be ready to pull back on the drill the instant you break through. Use screw provided to secure and remove this plug. Carefully turn mixture screws clockwise until lightly seated, then back out 1-1/2 turns or where the best idle is achieved. **NOTE:** *The mixture screw is on the left side for the front cylinder and the right side for the rear cylinder.*

Dynojet

3126HA.001

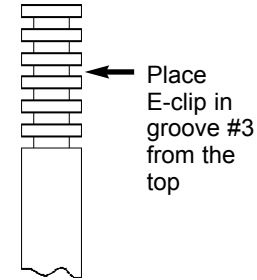


Fig. A

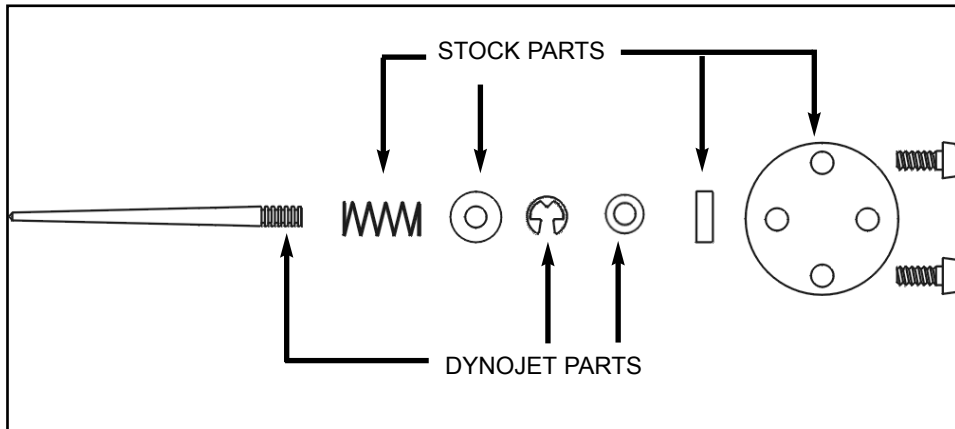


Fig. B

