

Thank you for purchasing this Dynojet kit. This kit has been developed for a motorcycle which is set to the parameters listed at the right in the "Stage" description. If your motorcycle does not meet any of these parameters please check with Dynojet before installation. For technical assistance contact your Dynojet distributor or call Dynojet U.S.A. (800)-992-4993



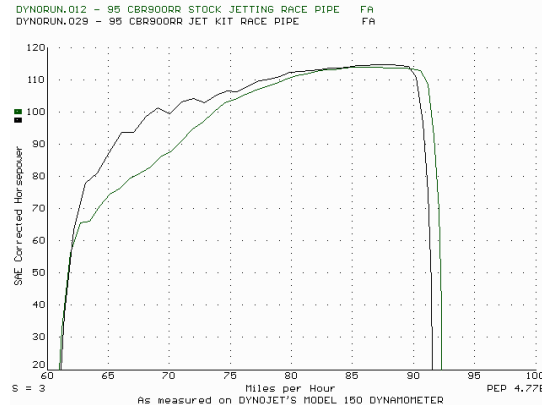
**E1746.002**

European Models Only

*1993-95 Honda CBR900RR*

**Stage 7 - Race Use Only**

For mildly tuned machines using the stock airbox, with stock or K&N filter# HA-9092. May also be used with a good aftermarket exhaust system.



*This graph shows a typical gain with a Dynojet jet kit.*

# WARNING

**NO SMOKING!  
 NO OPEN FLAME!  
 WHILE INSTALLING  
 YOUR DYNOJET KIT**

2191 Mendenhall Dr. Suite 105  
 North Las Vegas, NV 89031  
 TEL: 702-399-1423  
 FAX: 702-399-1431  
 8am-5pm Pacific Time  
 Monday through Friday

Website Address  
<http://www.dynojet.com>

The manufacturer and seller make no warranties express or implied which extend beyond the description of the goods contained herein. Any description of this product is for the purpose of identifying it and shall not be deemed to create an express warranty.

## Parts List

4	Main Jets	DJ116
4	Main Jets	DJ118
4	Main Jets	DJ120
4	Fuel Needles	DNO236
4	Adjusting Washers	DW0001
4	E-Clips	DE0001
4	Needle Shrouds	DNJT02
1	Glue	DA0001
1	Slide Drill	DD #29

**STAGE SEVEN INSTRUCTIONS**

1. Remove the vacuum slide from the carbs. Remove the spring from slide. Thread one of the slide cover screws into the center of the needle retainer (Fig. B) and pull up gently. Remove the stock needles & spacers, noting the order of assembly (Fig. C)
2. Using the slide drill (DD #29) provided, enlarge your stock slide lift holes (Fig. E). Some models already have enlarged slide lift holes stock. If so, no drilling is necessary.
3. Locate the Dynojet part #DNJT02 supplied. With cutaway facing up and to the engine (Fig.A), press over stock needle jet and hold. Before pressing down add a touch of glue to the outer base of the stock needle jet, then press down. Check to make sure there is no excess glue visible.
4. Install the Dynojet needles on groove #3, using all stock spacers (Fig. C). Install the Dynojet washers above the E-clip. Install stock spring retainers with springs.
5. Remove stock main jets and replace with Dynojet mains provided. If you are running the stock exhaust use the DJ118 main jets, if you are running an aftermarket header or slip-on with high flowing baffle, use the DJ120 main jets. Be sure that the jets you are changing are the main jets.
6. Locate the Fuel Mixture Tab (Fig.D). Carefully turn mixture tabs clockwise until they seat, turn out 2 turns or where you find your best idle.

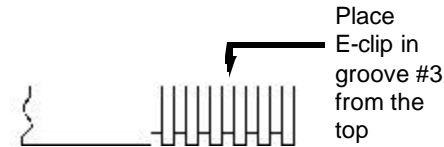


Fig. A

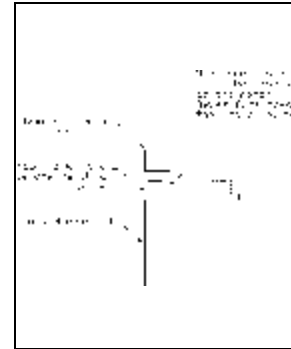


Fig. B

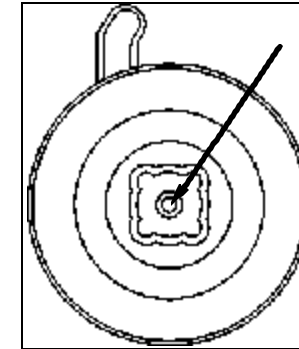


Fig. C

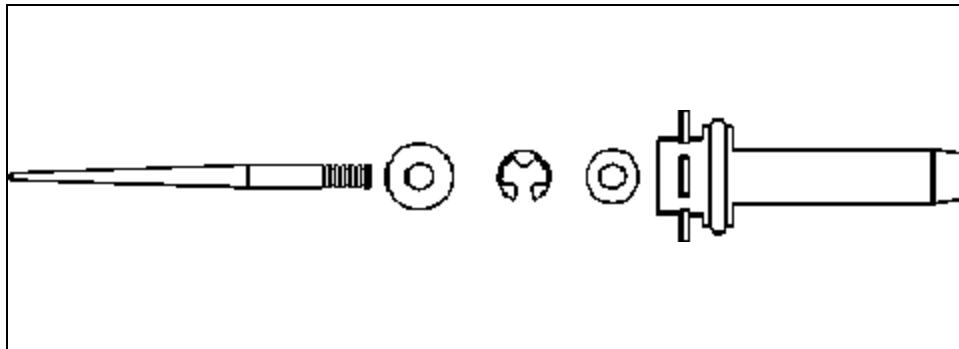


Fig. D

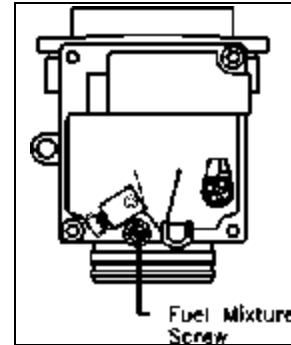


Fig. E

