

Q115.001

2005-2009 Honda

500 Foreman

Stage 1

For mildly tuned machines using the stock airbox with stock or aftermarket filter. May also be used with a good aftermarket exhaust system.

<i>Parts List</i>		
1	Main Jet	DJ146
1	Main Jet	DJ150
1	Main Jet	DJ155
1	Main Jet	DJ160
1	Main Jet	DJ165
1	Main Jet	DJ170
1	Main Jet	DJ175
1	Fuel Needle	DNO190
1	Slide Spring	DSP012
1	Mixture Screw Tool	DT008
1	Adjusting Washer	DW0001
1	E-Clip	DE0001

STAGE ONE INSTRUCTIONS

Q115.001

1. Remove vacuum slide from the carb. Remove stock needles & spacers, noting order of assembly (Fig. A).
2. Install Dynojet needle on groove #3 for applications below 5000 feet, groove #2 for above 5000 feet, using all stock spacers. Install the Dynojet washer above the E-clip.
3. Install Dynojet slide spring (DSP012) in place of the stock slide spring.
4. Remove stock main jet and replace with Dynojet main provided. Use the DJ165 below 3000 feet, DJ160 from 3000 to 6000 feet and DJ155 above 6000 feet. When using an aftermarket exhaust with a high flow baffle, use the DJ170 below 3000 feet, DJ165 from 3000 to 6000 feet and the DJ160 above 6000 feet.
5. Locate the Fuel Mixture Screw (Fig.B). Using the tool (DT008) provided, turn the mixture screw clockwise until it seats, then turn out 2.5 turn, 2 turns above 5000 feet.

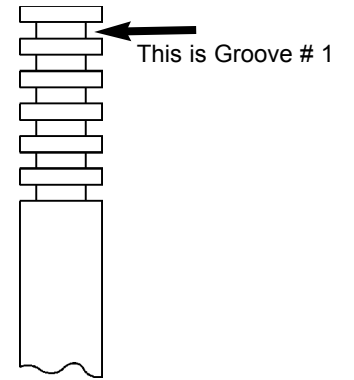


Fig. A

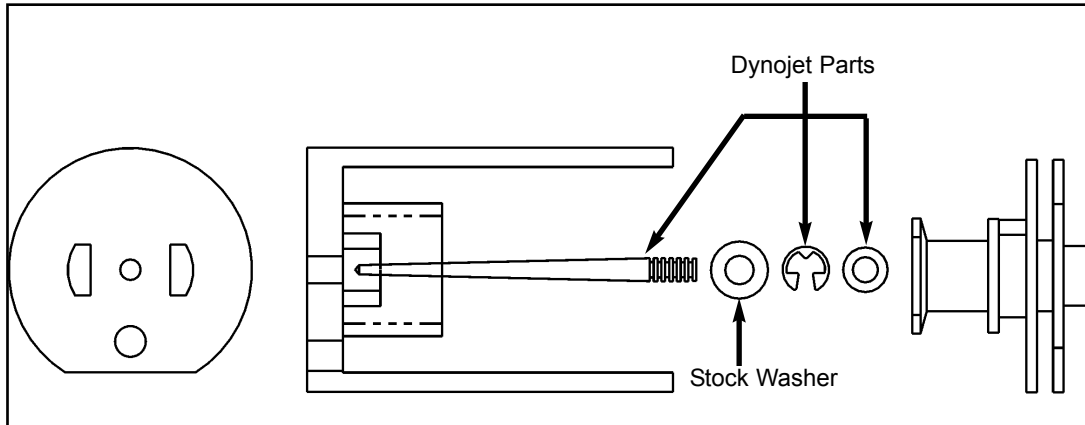
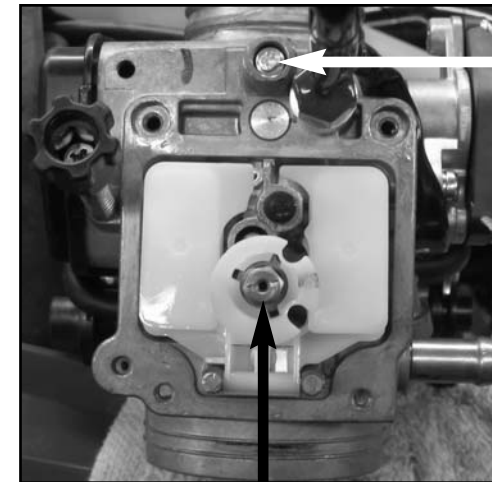


Fig.B



Fuel Mixture Screw

Main Jet Location