

Q201.001
1987-2001 Kawasaki 250
Mojave
STAGE 1

For mildly tuned machines using the stock airbox, with stock or aftermarket filter. May also be used with a good aftermarket exhaust system. K&N Filter # KA-2587.

PARTS LIST		
1	Main Jet	DJ122
1	Main Jet	DJ126
1	Main Jet	DJ130
1	Main Jet	DJ134
1	Fuel Needle	DNO106S
2	Adjusting Washer	DW0001
1	E-Clip	DE0001

STAGE ONE INSTRUCTIONS

1. Remove vacuum slide from carb. Remove stock needle & spacers, noting order of assembly.
2. Install Dynojet needle on groove# 3 for applications below 5000 feet, groove #2 for above 5000 feet, using all stock spacers. Install the Dynojet washers above the E-clip.
3. Remove stock main jet and replace with Dynojet main provided. Use the DJ130 below 3000 feet, DJ126 from 3000 to 6000 feet and DJ122 above 6000 Feet. If you are running an aftermarket exhaust, use the DJ134 below 3000 feet, DJ130 from 3000 to 6000 feet and the DJ126 above 6000 feet. Be sure that the jet you are changing is the main jet. **NOTE: The main jet screws into the brass emulsion tube and is dead center in the carb body.**
4. Locate the Fuel Mixture Screw. Using a flat blade screwdriver, turn the mixture screw clockwise until it seats, then turn out 2 turns .

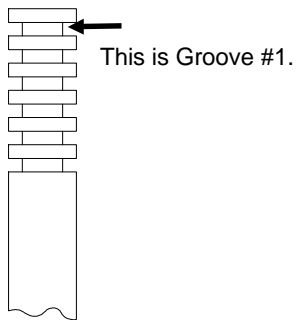
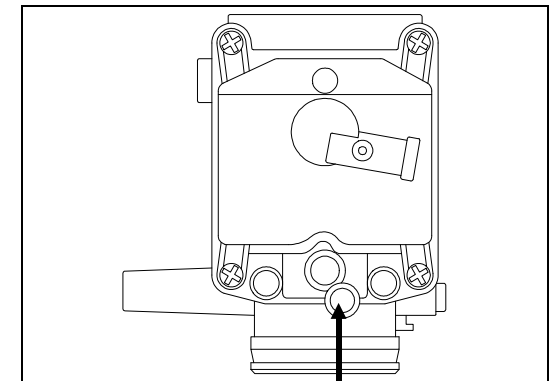
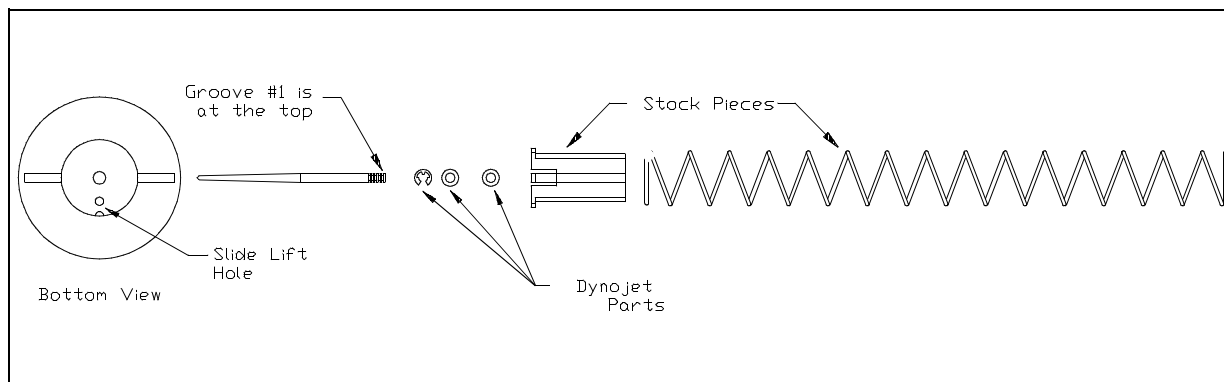


Fig. A

Fig. B



Fuel Mixture Screw