

Q211.002
2002~2010 Kawasaki
360 Prairie
Stage 1

For mildly tuned machines using the stock airbox with stock or aftermarket filter. May also be used with a good aftermarket exhaust system.

<i>Parts List</i>		
1	Main Jet	DJ138
1	Main Jet	DJ142
1	Main Jet	DJ146
1	Main Jet	DJ150
1	Main Jet	DJ155
1	Main Jet	DJ160
1	Fuel Needle	DNO242
2	Adjusting Washers	DW0001
1	E-Clip	DE0001
1	Plug Drill	DD 5/32
1	Screw	DS0001

STAGE ONE INSTRUCTIONS

Q211.002

1. Remove vacuum slide from carb. Remove stock needle & spacers, noting order of assembly (Fig.A).
2. Install Dynojet needle on groove #3 for applications below 5000 feet, groove #2 for above 5000 feet, using all stock spacers. Install the Dynojet washers above the E-clip (Fig.A).
3. Remove stock main jet and replace with Dynojet main jet provided. Use the DJ150 below 3000 feet, DJ146 from 3000 to 6000 feet and DJ142 above 6000 feet. When using an aftermarket exhaust with a high flow baffle, use the DJ155 below 3000 feet, DJ150 from 3000 to 6000 feet and the DJ146 above 6000 feet.
4. Locate the Fuel Mixture Screw (Fig.B). If you see a screw head at Fig.B then proceed to the adjusting procedure. With the 5/32 drill bit provided carefully drill through the plug. **NOTE: The mixture screw is directly underneath this plug, be ready to pull back on the drill the instant you break through.** Use the screw provided to secure and remove this plug. Carefully turn the mixture screw clockwise until lightly seated, then turn out 2.5 turns, 2 turns above 5000 feet.

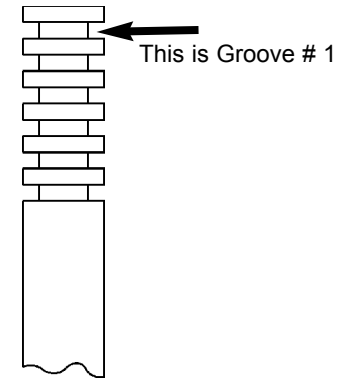


Fig.A

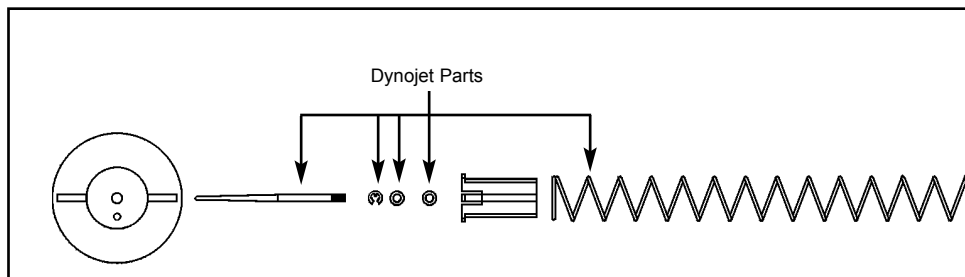


Fig.B

