

Q213.002

2003-04 Kawasaki KFX400

Stage 1&2

Stage1

For mildly tuned machines using the stock airbox with stock or aftermarket filter. May also be used with a good aftermarket exhaust system. K&N Filter # N/A

Stage2

For mildly tuned machines using the stock airbox with the lid remove and stock or aftermarket filter. Should also be used with a good aftermarket exhaust system. K&N Filter # N/A

Parts List		
1	Main Jet	DJ112
1	Main Jet	DJ116
1	Main Jet	DJ120
1	Main Jet	DJ124
1	Main Jet	DJ128
1	Main Jet	DJ132
1	Main Jet	DJ136
1	Main Jet	DJ138
1	Main Jet	DJ140
1	Main Jet	DJ142
1	Main Jet	DJ144
1	Main Jet	DJ146
1	Main Jet	DJ150
1	Main Jet	DJ155
1	Main Jet	DJ160
1	Main Jet	DJ165
1	Fuel Needle	DNO712
1	Needle Spring	DSP77
1	Adjusting Washer	DW0001
1	E-clips	DE0001

STAGE ONE INSTRUCTIONS

1. Remove vacuum slide from carb. Remove stock needle & spacers, noting order of assembly (Fig.A).
2. Install Dynojet needle on groove #3 for applications below 5000 feet, groove #2 for above 5000 feet, using all stock spacers (Fig.A). **NOTE:** The DSP77 spring does not have to be used, it is supplied in case the stock spring is misplaced. The Dynojet washer (DW0001) does not need to be installed at this time, it is for half step adjustments. After installing the slides in the carbs be sure to check slide movement manually before air box installation.
3. Remove stock main jet and replace with Dynojet main jet provided. Use the DJ120 below 3000 feet, DJ116 from 3000 to 6000 feet and DJ112 above 6000 feet. When using an aftermarket exhaust with a high flow baffle, Use the DJ124 below 3000 feet, DJ120 from 3000 to 6000 feet and the DJ116 above 6000 feet.
If you remove the end cap from the airbox intake snorkle you will need to use the DJ140 below 3000 feet, DJ136 from 3000 to 6000 feet and DJ132 above 6000 feet. When using an aftermarket exhaust with a high flow baffle, Use the DJ144 below 3000 feet, DJ140 from 3000 to 6000 feet and the DJ136 above 6000 feet.
4. Locate the Fuel Mixture Screw (Fig.B). **NOTE:** There may be a rubber plug over the mixture screw. Using a flat blade screwdriver, turn the mixture screw clockwise until it seats, then turn out 3.5 turns, 3 turns above 5000 feet.

STAGE TWO INSTRUCTIONS

1. Remove the airbox lid.
2. Remove vacuum slide from carb. Remove stock needle & spacers, noting order of assembly (Fig.A).
3. Install Dynojet needle on groove #3 for applications below 5000 feet, groove #2 for above 5000 feet, using all stock spacers (Fig.A). **NOTE:** The DSP77 spring does not have to be used, it is supplied in case the stock spring is misplaced. The Dynojet washer (DW0001) does not need to be installed at this time, it is for half step adjustments. After installing the slides in the carbs be sure to check slide movement manually before air box installation.
4. Remove stock main jet and replace with Dynojet main jet provided. Use the DJ146 below 3000 feet, DJ142 from 3000 to 6000 feet and DJ138 above 6000 feet. When using an aftermarket exhaust with a high flow baffle, Use the DJ150 below 3000 feet, DJ146 from 3000 to 6000 feet and the DJ142 above 6000 feet.
5. Locate the Fuel Mixture Screw (Fig.B). **NOTE:** There may be a rubber plug over the mixture screw. Using a flat blade screwdriver, turn the mixture screw clockwise until it seats, then turn out 3.5 turns, 3 turns above 5000 feet.

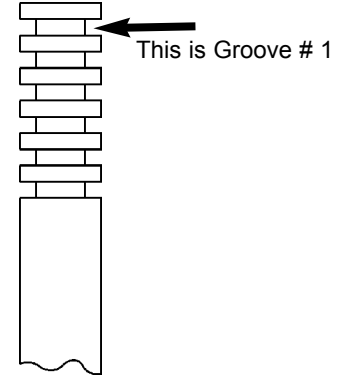


Fig.A

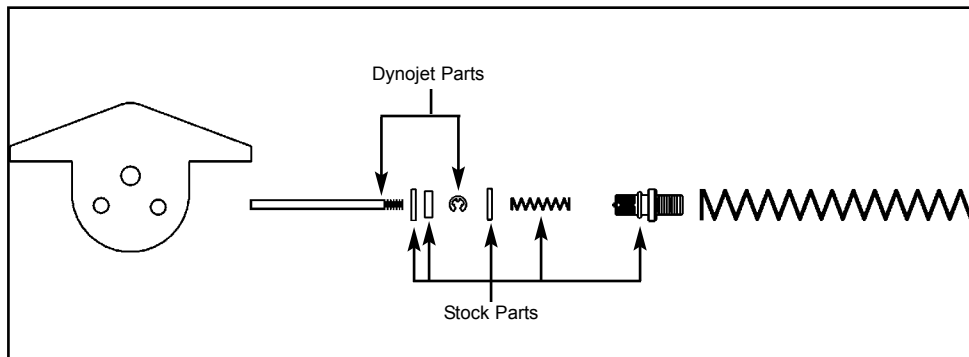


Fig.B

