

Q219.001

2005~2011 Kawasaki

650 Brute Force

Stage 1

For mildly tuned machines using the stock airbox with stock or aftermarket filter. May also be used with a good aftermarket exhaust system.

| <i>Parts List</i> | | |
|--------------------------|-------------------|---------|
| 1 | Main Jet | DJ120 |
| 1 | Main Jet | DJ124 |
| 1 | Main Jet | DJ128 |
| 1 | Main Jet | DJ132 |
| 1 | Main Jet | DJ136 |
| 1 | Main Jet | DJ140 |
| 1 | Main Jet | DJ144 |
| 2 | Fuel Needles | DNO304 |
| 4 | Adjusting Washers | DW0001 |
| 2 | E-Clips | DE0001 |
| 2 | Slide Springs | DSP031 |
| 1 | Plug Drill | DD 5/32 |
| 1 | Screw | DS0001 |

STAGE ONE INSTRUCTIONS

1. Remove vacuum slides from carbs. Remove stock needles & spacers, noting order of assembly (Fig.A).
2. Install Dynojet needles on groove #5 for applications below 5000 feet, groove #4 for above 5000 feet, using all stock spacers. Install the Dynojet washers above the E-clip, 2 per needle (Fig.A).
3. Install the Dynojet slide spring (DSP031) in place of the stock slide springs.
4. Remove stock main jets and replace with Dynojet main jets provided. Use the DJ132 in the front carb and the DJ136 in the rear carb below 3000 feet, DJ128 in the front carb and the DJ132 in the rear carb from 3000 to 6000 feet and DJ120 in the front carb and the DJ124 in the rear carb above 6000 feet. When using an aftermarket exhaust with a high flow baffle, use the DJ136 in the front carb and the DJ140 in the rear carb below 3000 feet, DJ132 in the front carb and the DJ136 in the rear carb from 3000 to 6000 feet and the DJ124 in the front carb and the DJ128 in the rear carb above 6000 feet.
5. Locate the Fuel Mixture Screw (Fig.B). If you see a screw head at Fig.B then proceed to the adjusting procedure. With the 5/32 drill bit provided carefully drill through the plug. **NOTE: The mixture screw is directly underneath this plug, be ready to pull back on the drill the instant you break through.** Use the screw provided to secure and remove this plug. Using a flat blade screwdriver, carefully turn the mixture screws clockwise until seated, then turn out 3 turns, 2.5 turns above 5000 feet.

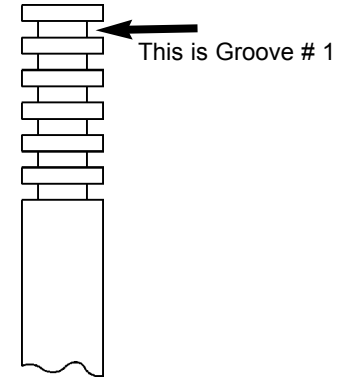


Fig.A

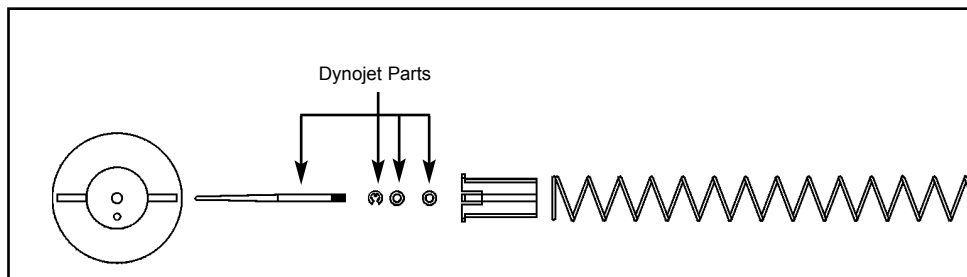


Fig.B

