

Q220.001

2006-2013 Kawasaki KVF650I Brute Force

Stage 1

For mildly tuned machines using the stock airbox with stock or aftermarket filter. May also be used with a good aftermarket exhaust system.

<i>Parts List</i>		
2	Main Jets	DJ128
2	Main Jets	DJ132
2	Main Jets	DJ136
2	Main Jets	DJ140
2	Main Jets	DJ144
2	Main Jets	DJ148
2	Fuel Needles	DNO227
4	Adjusting Washers	DW0001
2	E-Clips	DE0001
2	Slide Springs	DSP005
1	Plug Drill	DD 5/32
1	Screw	DS0001

STAGE ONE INSTRUCTIONS

1. Remove vacuum slides from carbs. Remove stock needles & spacers, noting order of assembly (Fig.A).
2. Install Dynojet needles on groove #4 for applications below 5000 feet, groove #3 for above 5000 feet. Install the Dynojet washers above the E-clip, 2 per needle (Fig.A).
3. Install the Dynojet slide springs DSP005, in place of the stock slide springs.
4. Remove the float bowls from the bottom of the carbs, remove the stock main jets and replace with Dynojet main jets provided. When using the stock exhaust, install the DJ136 below 3000 feet, DJ132 from 3000 to 6000 feet and DJ128 above 6000 feet. When using an aftermarket exhaust with a high flow baffle, install the DJ140 below 3000 feet, DJ136 from 3000 to 6000 feet and the DJ132 above 6000 feet.
5. Locate the Fuel Mixture Screw (Fig.B). If you see a screw head at Fig.B then proceed to the adjusting procedure. With the 5/32 drill bit provided carefully drill through the plug. **NOTE: The mixture screw is directly underneath this plug, be ready to pull back on the drill the instant you break through.** Use the screw provided to secure and remove this plug. Carefully turn the mixture screw clockwise until lightly seated, then turn out 2.5 turns, 1.5 turns above 5000 feet.

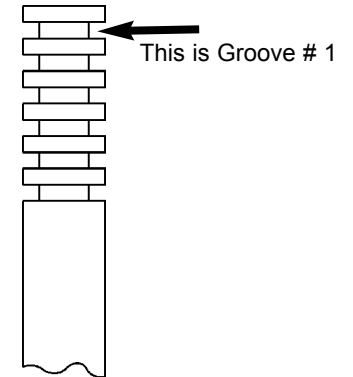


Fig.A

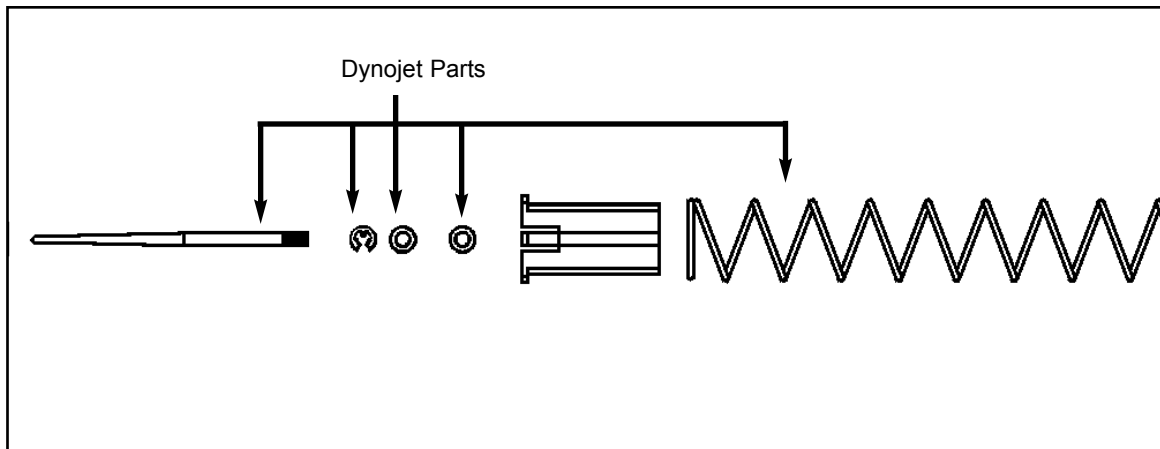


Fig.B

