

**Q317.001**  
**2008-2009 Suzuki**  
**400 KingQuad STD**  
**Stage 1**

For mildly tuned machines using the stock airbox with stock or aftermarket filter. May also be used with a good aftermarket exhaust system.

<b><i>Parts List</i></b>		
1	Main Jet	DJ108
1	Main Jet	DJ110
1	Main Jet	DJ112
1	Main Jet	DJ114
1	Main Jet	DJ116
1	Main Jet	DJ118
1	Main Jet	DJ120
1	Main Jet	DJ122
1	Main Jet	DJ124
1	Fuel Needle	DNO207
2	Adjusting Washers	DW0001
1	E-clip	DE0001
1	Plug Drill	DD 5/32
1	Screw	DS0001

## STAGE ONE INSTRUCTIONS

1. Remove vacuum slide from carb. Remove stock needle & spacers, noting order of assembly (Fig.A).
2. Install Dynojet needle on groove #2 for applications below 5000 feet, groove #1 for above 5000 feet, using all stock spacers. Install the Dynojet washers above the E-clip (Fig.A).
3. Remove stock main jet and replace with Dynojet main jet provided. Use the DJ118 below 3000 feet, DJ114 from 3000 to 6000 feet and DJ110 above 6000 feet. When using an aftermarket exhaust with a high flow baffle, use the DJ122 below 3000 feet, DJ118 from 3000 to 6000 feet and the DJ114 above 6000 feet. When using an aftermarket exhaust with a quiet baffle, use the DJ120 below 3000 feet, DJ116 from 3000 to 6000 feet and the DJ112 above 6000 feet.
4. Locate the Fuel Mixture Screw (Fig.B). If you see a screw head at Fig. B then proceed to the adjusting procedure. With the 5/32 drill bit provided, carefully drill through the plug. **NOTE: The mixture screw is directly underneath this plug, be ready to pull back on the drill the instant you break through.** Use screw provided to secure and remove this plug. Carefully turn the mixture screw clockwise until lightly seated, then back out 2.5 turns.

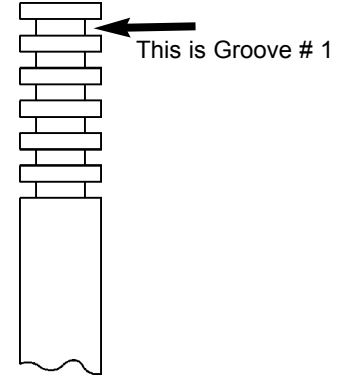


Fig.A

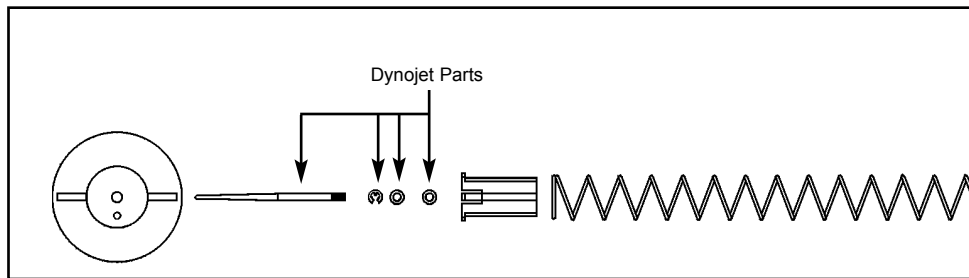


Fig.B

