

QR214.001 2003~2009 Kawasaki KFX700

Stage 7

For race use only!

This kit is intended for closed course competition only.

This kit will improve top-end power and throttle response, but may compromise low-end driveability.

<i>Parts List</i>		
1	Main Jet	DJ150
1	Main Jet	DJ155
1	Main Jet	DJ160
1	Main Jet	DJ165
1	Main Jet	DJ170
1	Main Jet	DJ175
1	Main Jet	DJ180
1	Main Jet	DJ185
1	Main Jet	DJ190
2	Fuel Needles	DNO119
6	Adjusting Washers	DW0001
4	E-Clips	DE0001
1	Plug Drill	DD 5/32
1	Screw	DS0001

STAGE SEVEN INSTRUCTIONS

QR214.001

The following settings are just a starting point. These settings are for use with an aftermarket exhaust with a high flow baffle and the lid removed from the airbox, at sea level. You will need to go down 1 size on the main jets for every 3000 feet of elevation.

1. Remove vacuum slides from carbs. Remove stock needles & spacers, noting order of assembly (Fig.A).
2. Install Dynojet needles on groove #5, using all stock spacers. Install the Dynojet washers above the E-clip, 2 per needle (Fig.A). Only two e-clips are needed, the other e-clips are provided as spares.
3. Remove stock main jets and replace with Dynojet main jets provided. Use the DJ170 in the front carb and the DJ175 in the rear carb.
4. Locate the Fuel Mixture Screws (Fig.B). If you see a screw head at Fig.B then proceed to the adjusting procedure. With the 5/32 drill bit provided carefully drill through the plug. **NOTE: The mixture screw is directly underneath this plug, be ready to pull back on the drill the instant you break through.** Use the screw provided to secure and remove this plug. Carefully turn the mixture screw clockwise until lightly seated, then turn out 3.5 turns.

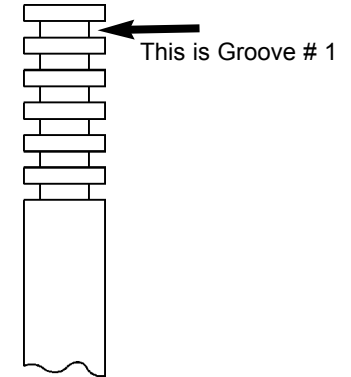


Fig.A

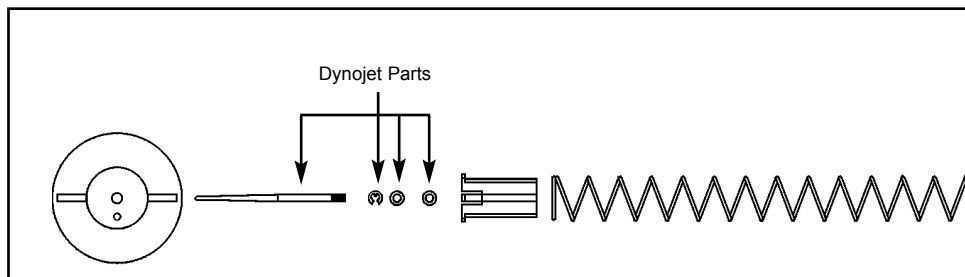


Fig.B

