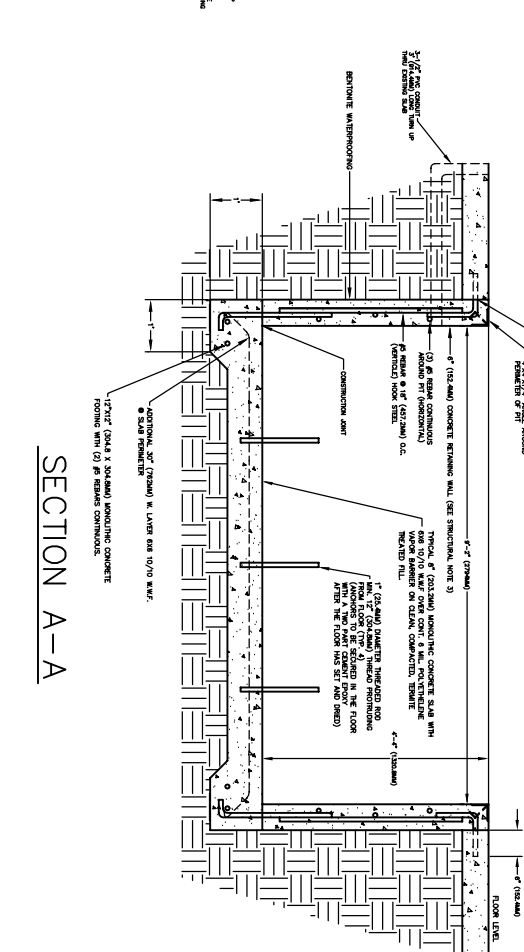
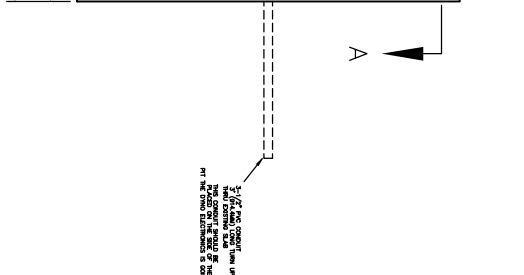
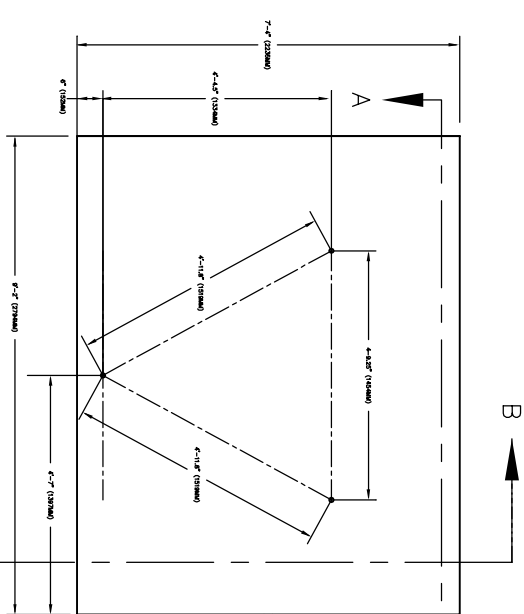


REVISIONS			DATE	APPROVED
CR#	REV	DESCRIPTION		
1001	04	CHANGE P/N FROM 020071 TO 0918	07/23/01	JFE



NOTES

1. ALL DIMENSIONS ARE TO FACE OF MAJOR SURFACE UNLESS OTHERWISE NOTED.
2. ALL WORK SHALL BE IN ACCORDANCE WITH LOCAL AND STATE CODES AND STANDARDS.
3. VERIFY ALL UNDERGROUND UTILITIES BEFORE FOUNDATION WORK.

STRUCTURAL NOTES

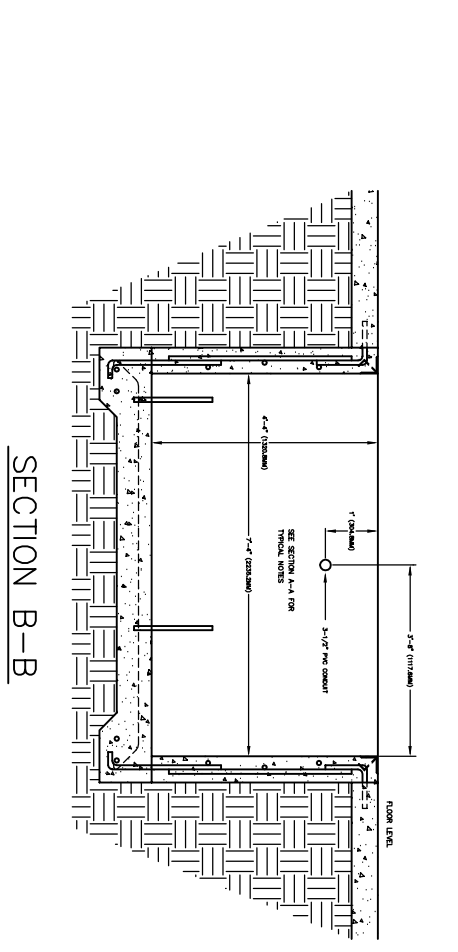
1. THE PROJECT SHALL BE CONSTRUCTED IN ACCORDANCE WITH THE 2001 INTERNATIONAL BUILDING CODE (IBC) AND THE 2001 INTERNATIONAL MECHANICAL AND ELECTRICAL CODE (IMC).
2. FOUNDATION SHALL BE CONSTRUCTED IN ACCORDANCE WITH THE 2001 INTERNATIONAL FOUNDATION CODE (IFC).
3. ALL REINFORCING STEEL SHALL BE WELDED TO THE MAJOR SURFACE UNLESS OTHERWISE NOTED.
4. MAJOR SURFACE SHALL BE AT LEAST C-90 GRADE. ALL WORK SHALL BE IN ACCORDANCE WITH ALL APPLICABLE LOCAL, STATE AND FEDERAL CODES AND STANDARDS.

STRUCTURAL NOTES

1. ALL DIMENSIONS ARE TO FACE OF MAJOR SURFACE UNLESS OTHERWISE NOTED.
2. ALL WORK SHALL BE IN ACCORDANCE WITH LOCAL AND STATE CODES AND STANDARDS.
3. VERIFY ALL UNDERGROUND UTILITIES BEFORE FOUNDATION WORK.

STRUCTURAL NOTES

1. THE PROJECT SHALL BE CONSTRUCTED IN ACCORDANCE WITH THE 2001 INTERNATIONAL BUILDING CODE (IBC) AND THE 2001 INTERNATIONAL MECHANICAL AND ELECTRICAL CODE (IMC).
2. FOUNDATION SHALL BE CONSTRUCTED IN ACCORDANCE WITH THE 2001 INTERNATIONAL FOUNDATION CODE (IFC).
3. ALL REINFORCING STEEL SHALL BE WELDED TO THE MAJOR SURFACE UNLESS OTHERWISE NOTED.
4. MAJOR SURFACE SHALL BE AT LEAST C-90 GRADE. ALL WORK SHALL BE IN ACCORDANCE WITH ALL APPLICABLE LOCAL, STATE AND FEDERAL CODES AND STANDARDS.



SECTION A-A

SECTION B-B

DYNOJET RESEARCH
200 ARDEN DRIVE, BELGRADE, MT 59714

CAR DYNAMOMETER FINISHED PIT DIMENSIONS

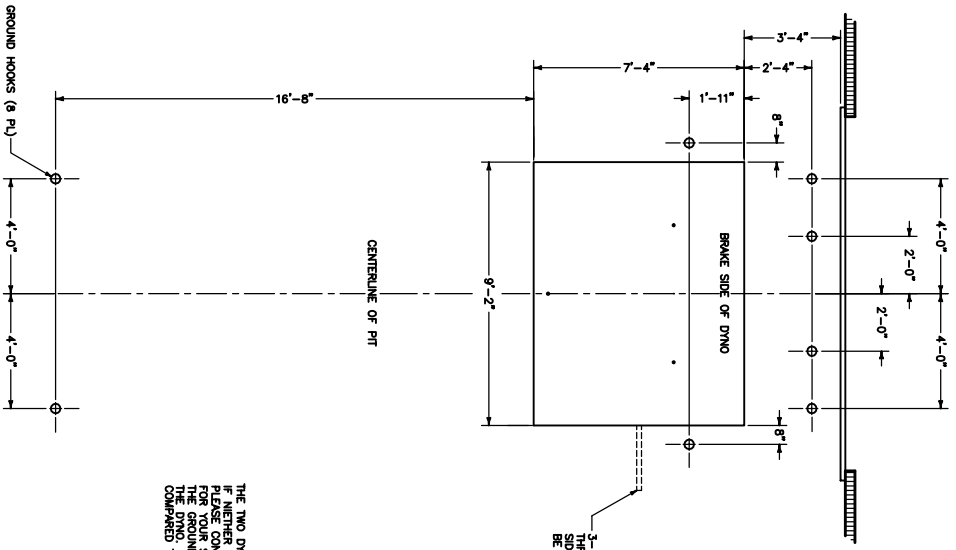
CREATED: ABE 07/20/95
LAST UPDATE: CTS 07/23/01
DESIGNED: XXX
SCALE: XX

APPROVED: D918

SHEET 1 OF 2

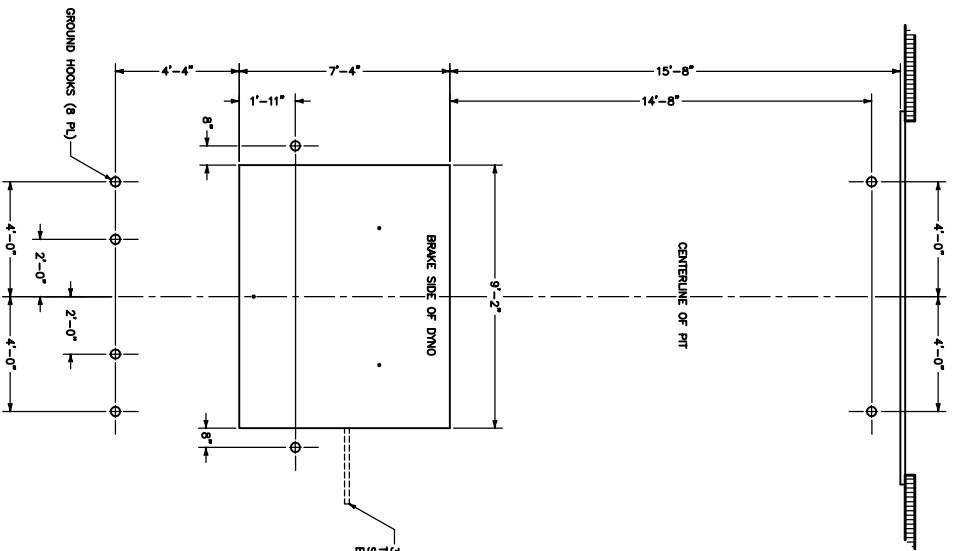
THIS DRAWING IS THE PROPERTY OF DYNOJET RESEARCH, INC. AND IS NOT TO BE REPRODUCED OR TRANSMITTED IN ANY FORM OR BY ANY MEANS, ELECTRONIC OR MECHANICAL, INCLUDING PHOTOCOPYING, RECORDING, OR BY ANY INFORMATION STORAGE AND RETRIEVAL SYSTEM, WITHOUT THE WRITTEN PERMISSION OF DYNOJET RESEARCH, INC. DYNOJET RESEARCH, INC.

REVISIONS		DATE	APPROVED
ZONE	REV	DESCRIPTION	
1001	04	CHANGE P/N FROM C20072 TO 0918	JFE



OPTIMUM REAR WHEEL INSTALLATION

THE TWO DYNO LOCATIONS SHOWN ABOVE ARE MOST COMMONLY USED. HOWEVER, IF YOUR SITUATION REQUIRES A DIFFERENT DYNAMOMETER LOCATION, PLEASE CONTACT DYNOLIFT. DYNOLIFT CAN HELP IN THE OPTIMUM LAYOUT FOR YOUR SITUATION AND NEEDS. MAKE SURE WHEN INSTALLING THE GROUND HOOKS, THE HOOK SWIVELS UP AND DOWN TOWARDS THE DYNOMETER. THE HOOK SWIVELS UP AND DOWN TOWARDS THE DYNOMETER COMPARED TO THE HOOKS IN FRONT AND BACK OF THE DYNOMETER.



OPTIMUM FRONT WHEEL INSTALLATION

MATERIALS		FINISH:	
N/A		N/A	
UNLESS OTHERWISE SPECIFIED:		TOLERANCES:	
DECIMALS ± 0.01		FRACTIONAL ANGULAR	
DO NOT SCALE THIS DRAWING		CREATED: DMK 1/23/01	
LAST UPDATE: CTS 07/23/01		DESIGNED: DMK	
APPROVED:		SCALE: 1:25	RELEASE DATE:
DYNOLIFT RESEARCH		248C CAR DYNOMETER	DYNOMETER LOCATION GUIDE
200 ARDEN DRIVE, BELLEVILLE, MT 59714		D918	04
SHEET 2 OF 2			