

1973  
MT  
NV

# POWER VISION INSTALLATION GUIDE

Honda Talon

## × PARTS LIST

---

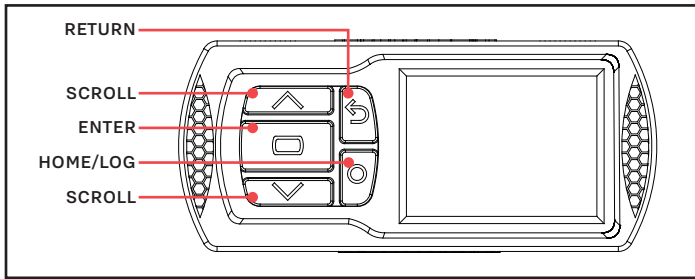
- |                   |                 |
|-------------------|-----------------|
| 1 POWER VISION    | 2 VELCRO        |
| 1 REFLASH HARNESS | 2 DYNOJET DECAL |
| 1 USB CABLE       |                 |

**PLEASE READ ALL DIRECTIONS BEFORE  
STARTING INSTALLATION**

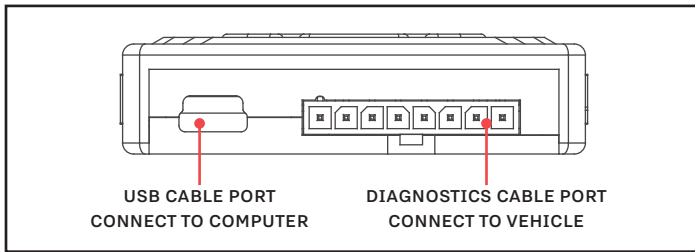
× 98200124.02



# INTRODUCTION



POWER VISION OVERVIEW—FRONT VIEW



POWER VISION OVERVIEW—SIDE VIEW

Thank you for purchasing the Power Vision from Dynojet Research. The Power Vision is the device to interface between your computer and vehicle ECU allowing you to tune your stock ECU to achieve optimal performance from your vehicle.

Use the buttons to navigate the device menus, make selections, cycle through the four available gauge screens, and log data. Connect to the diagnostic port to flash a tune; use the USB connection to interface between the Power Vision and your computer.

For state of the art technical support, please visit [www.dynojet.zendesk.com](http://www.dynojet.zendesk.com).

# INSTALLING THE POWER VISION



INSTALL POWER VISION



DIAGNOSTIC PORT

**1** Secure the Power Vision to the vehicle using the supplied Velcro. Make sure the Power Vision will not interfere with the operation and steering of the vehicle.

**Note:** The Power Vision does not need to be mounted to the vehicle.

**2** Attach the diagnostic cable to the diagnostic port on the Power Vision and to the diagnostic port on the vehicle.  
Talon Models: located under the seat, under a rubber flap cover.

# GETTING STARTED

Use the Tune File Wizard to prepare your Power Vision device with the stock (.stk) and tune (.djt) files needed to flash your vehicle.

- 1 Connect the Power Vision to the vehicle.
- 2 Turn the key on. The Power Vision will scan for files.

There are three possible file states:

**File State 1:** No compatible tune or stock files.

**File State 2:** No compatible tune files.

**File State 3:** All required files found.

- 3 Gauges are displayed.

Connect the Power Vision to the vehicle diagnostic port to collect ECU information. Turn the key on.



## File State 1:

Go to [www.dynojet.com/pvtunes](http://www.dynojet.com/pvtunes) to download stock and tune files.

### GETTING STARTED

NO COMPATIBLE STOCK FILES  
To download tunes, visit:  
[WWW.DYNOJET.COM/PVTUNES](http://WWW.DYNOJET.COM/PVTUNES)  
PRESS [ENTER] TO SEARCH AGAIN

## File State 2:

Go to [www.dynojet.com/pvtunes](http://www.dynojet.com/pvtunes) to download tune files.

### GETTING STARTED

NO COMPATIBLE TUNE FILES  
To download tunes, visit:  
[WWW.DYNOJET.COM/PVTUNES](http://WWW.DYNOJET.COM/PVTUNES)  
PRESS [ENTER] TO SEARCH AGAIN

## File State 3:

All required files found. The Power Vision is ready to flash a tune to the connected vehicle.

### READY TO FLASH

ALL REQUIRED FILES FOUND  
PRESS [ENTER] TO READ ECU  
PRESS [ENTER] TO EXIT WIZARD

# FLASHING YOUR VEHICLE

The Power Vision must be paired to the connected vehicle ECU to function properly.

**Note:** Once paired to the vehicle ECU, the Power Vision will not work on another vehicle without purchasing a tune license.

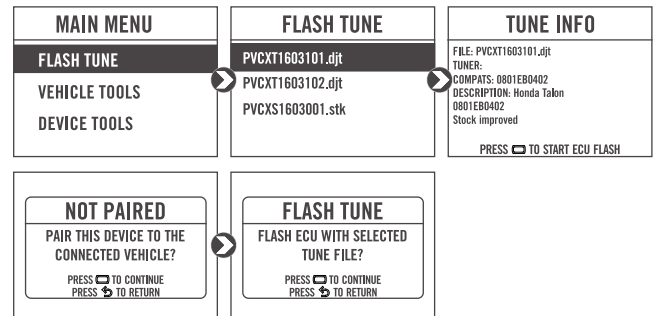
- 1 From the Main Menu, select **Flash Tune**.
- 2 Select the tune file (.djt) and press **Enter** to view the Tune Info.

**Note:** The Dynojet tune file (.djt) is a tune file which is different (better than stock performance or the necessary file when bolting on an exhaust, for example); the stock file (.stk) is the direct duplicate of what the OEM shipped.

- 3 Press **Enter** to accept the tune and pair the Power Vision to the vehicle.

**Note:** Pair to vehicle will only happen on the first flash.

- 4 Press **Enter** to pair and lock the Power Vision to the ECU and to begin the flash. Do not turn off the key switch or disconnect the Power Vision during the flash.
- 5 After the flash is complete, turn the key off and wait 45 seconds before turning the key back on to start.



# VIEWING THE VEHICLE INFORMATION

This menu allows you to view the device status (paired/not paired), VIN #, Model ID, ECU serial number, tune compat, and checksum compat.

Select **Vehicle Tools > Vehicle Information**.



98200124.02

**DYNOJET**

# VIEWING THE DIAGNOSTIC CODES

This menu allows you to read and clear diagnostic trouble codes.

- 1 To read codes, select **Vehicle Tools>Diagnostics>Active Codes**.
- 2 To clear codes, select **Vehicle Tools>Diagnostics>Clear Codes**.

MAIN MENU	VEHICLE TOOLS	DIAGNOSTICS
FLASH TUNE	VEHICLE INFORMATION	ACTIVE CODES
VEHICLE TOOLS	DIAGNOSTICS	HISTORIC CODES
DEVICE TOOLS	READ ECU	CLEAR CODES

# CONFIGURING GAUGES

This menu allows you to configure up to four different gauge screens. Each gauge screen has four configurable channels.

- 1 From the Main Menu, select **Device Tools>Configure Gauges**.
- 2 Select a gauge screen and press **Enter**.
- 3 Select a channel and press **Enter**.
- 4 Select a channel from the list and press **Enter**.
- 5 Select the precision or units for that channel and press **Enter**.
- 6 Continue setting up the remaining channels as desired.
- 7 Continue configuring the remaining gauge screens as desired.

MAIN MENU	DEVICE TOOLS	CONFIGURE GAUGES
FLASH TUNE	CONFIGURE GAUGES	SCREEN 1
VEHICLE TOOLS	DEVICE INFORMATION	SCREEN 2
DEVICE TOOLS	REFORMAT DISK	SCREEN 3
		SCREEN 4


  

CONFIGURE SCREEN	SELECT UNIT	SELECT PRECISION
CHANNEL 1	RPM	0
CHANNEL 2	RPMx10	0.0
CHANNEL 3	RPMx100	0.00
CHANNEL 4	RPMx1000	0.000

# LOGGING DATA

- 1 Press the **Log** button to begin logging. The Power Vision screen will illuminate a bright red banner across the top when logging.
- 2 Press the **Log** button again to stop logging.
- 3 Use the Power Core software to view log files.

**Snapshot Log:** Press and hold the **Log** button for two seconds to record the previous two minutes of operating time.

DATA LOG DATA LOGGING HAS STARTED. PRESS AGAIN TO STOP	 Engine Speed <b>2550</b> RPM AFR 1 <b>14.6</b> AFR TPS <b>10.5</b> STFT <b>-6.3</b>	SAVING LOG SAVING LOG...
--	---	-----------------------------

DATA LOG 1603101_LOG_1.wp8 SAVED SUCCESSFULLY
---

# DELETING DATA LOGS

This menu allows you to delete data logs.

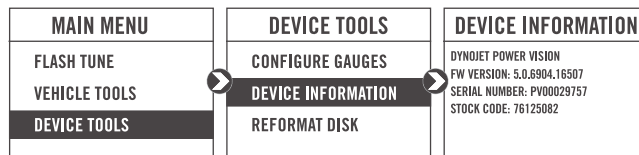
- 1 Select **Vehicle Tools>Delete Data Log**.
- 2 Select a specific log to delete or select **\*Delete All Logs\***.

MAIN MENU	VEHICLE TOOLS	LOG FILES
FLASH TUNE	DIAGNOSTICS	*Delete All Logs*
VEHICLE TOOLS	READ ECU	1603101_LOG_1.wp8
DEVICE TOOLS	DELETE DATA LOG	1603101_LOG_2.wp8
		1603101_LOG_3.wp8

# VIEWING THE DEVICE INFORMATION

This menu allows you to view the device firmware version, serial number, and stock code.

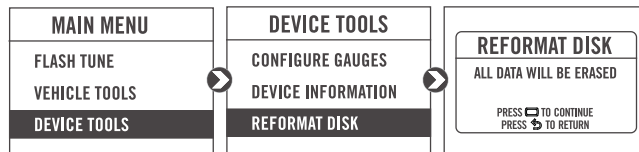
Select **Device Tools>Device Information**.



# REFORMATTING THE DISK

This menu allows you to reformat the disk and erase all data.

Select **Device Tools>Reformat Disk**.

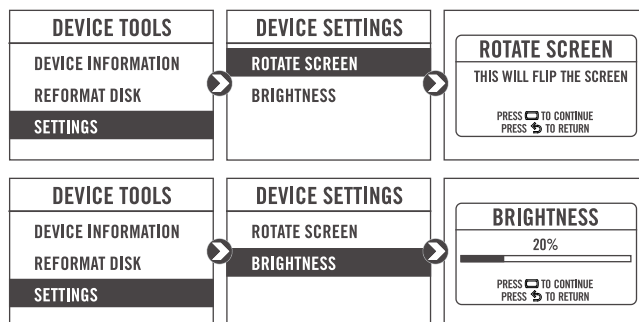


# CHANGING THE SETTINGS

This menu allows you to rotate the screen allowing you to change the orientation of the Power Vision device along with adjusting the screen brightness.

Select **Device Tools>Settings>Rotate Screen** to flip the screen.

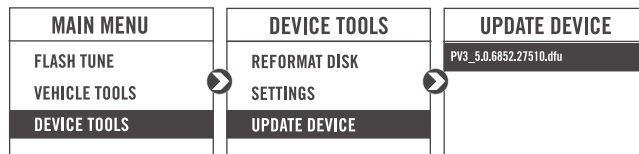
Select **Device Tools>Settings>Brightness** to change the screen brightness.



# UPDATING THE DEVICE

This menu allows you to update the device with the latest firmware.

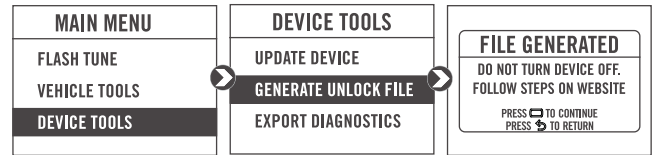
- 1 Go to [www.dynojet.com/PowerVision](http://www.dynojet.com/PowerVision).
- 2 From the top navigation menu, select **Support>Downloads**.
- 3 Select **Power Vision 3**.
- 4 Download the Power Vision 3 Firmware for Honda.
- 5 Save the file to your device.
- 6 Select **Device Tools>Update Device**.



# GENERATE UNLOCK FILE

This menu allows you to unlock the device.

- 1 Select **Device Tools>Generate Unlock File**.
- 2 Upload the file from the Power Vision to the Dynojet website.
- 3 Download the new unlock key file.
- 4 Save the file on your Power Vision.
- 5 Select the file and press enter. The Power Vision will verify the key and unlock the device.



# EXPORT DIAGNOSTICS

This menu allows you to create a BIN file containing device information used by Dynojet Tech Support.

- 1 Select **Device Tools>Export Diagnostics**.
- 2 If requested by Dynojet Tech Support, connect your Power Vision to a computer and email the BIN file to PV3tech@dynojet.com.

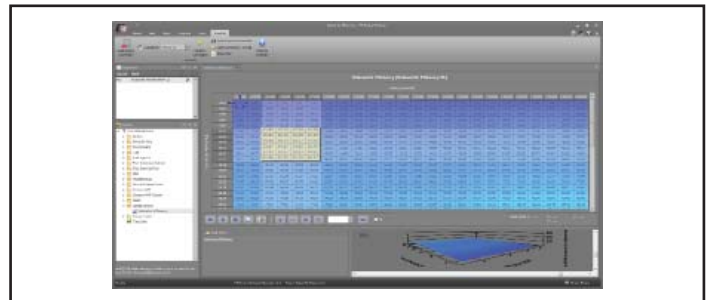


# INSTALLING THE POWER CORE SOFTWARE

Download the Power Core software and take tuning to a whole new level.

**Note:** Downloading the Power Core software is optional and not necessary to use the Power Vision.

- 1 Go to [www.dynojet.com/PowerVision](http://www.dynojet.com/PowerVision).
- 2 From the top navigation menu, select **Support>Downloads**.
- 3 Select **Power Vision CX** from the drop-down menu.
- 4 Download the Dynojet Power Core software.
- 5 Double-click the saved file to begin installation. Follow the on-screen prompts. Refer to the Power Core Help for more information.





# **PUSH THE LIMIT**

**2191 MENDENHALL DRIVE, NORTH LAS VEGAS, NV 89081 - 800-992-4993 - DYNOJET.COM**

**© 2019 DYNOJET RESEARCH ALL RIGHTS RESERVED**