

Autotune

Wideband O2 Controller for Power Commander V
Dual Channel Module Installation Guide

POWER
COMMANDER
V

PARTS LIST



- | | | | |
|---|--------------------------------|---|----------------|
| 1 | AUTOTUNE MODULE | 2 | DYNOJET DECALS |
| 1 | INSTALLATION GUIDE | 2 | VELCRO STRIPS |
| 2 | WIDEBAND O2 SENSORS AND CABLES | 1 | ALCOHOL SWAB |
| 1 | CAN CABLE | 3 | ZIP TIES |
| 2 | WELD BOSS | 2 | POSI-TAPS |

PLEASE READ ALL DIRECTIONS BEFORE STARTING INSTALLATION



IAT-300.07

INSTALLATION

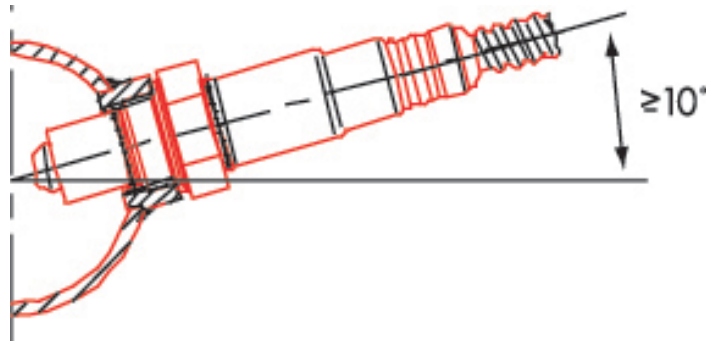
The Autotune kit is a universal product that can be utilized on any model using the PCV and which has a 12v power source. The system is not NOT intended to disable, eliminate, or replace stock OEM O2 sensors that may or may not be present on the vehicle.

Installing the Weld Boss

Some stock and aftermarket exhausts come equipped with an O2 sensor bungs. If your exhaust system already has 18mm x 1.5 threaded bungs, then you can usually use them for the Autotune wideband O2 sensors. If you have to drill holes for new bungs (mild steel bungs included), we recommend doing so before the catalytic converter (if applicable). It is recommended to position the weld bungs/sensors approximately 6-18 inches from the exhaust port of the cylinder.

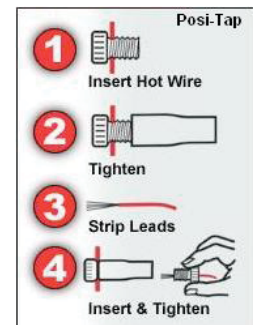
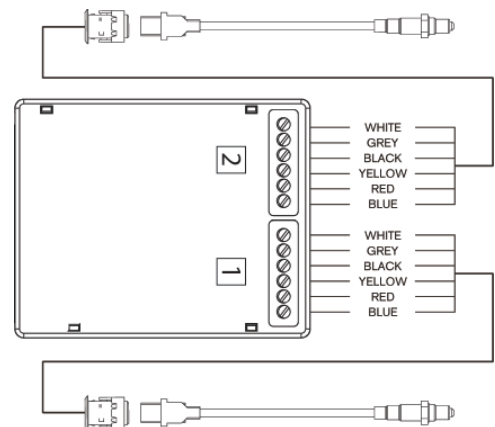
Mount the weld bosses in a manner that reduces the risk of moisture contamination on the sensors. Condensation can build up in the exhaust pipes and potentially damage the sensor. Ideally, you should orient the weld boss so the sensor is between the 9 o'clock and 3 o'clock position. A 10° inclination off the horizontal plane should be considered a minimum.

Note: Verify you have adequate clearance for the sensor and wiring harness. Make sure the O2 sensor harness is as straight as possible. If you must secure the harness to keep away from danger make sure you do not squeeze or pinch the sheathing of the harness.



Installing the Autotune Module

- 1 Install the Autotune module near the PCV.
- 2 Connect the Autotune module to the PCV using the supplied CAN cable. It does not matter which expansion port the cable is connected to.
- 3 Connect the O2 sensor cables to the O2 sensor and route the cable to the Autotune module ensuring the cable will not get pinched or damaged by the exhaust. The cable can be trimmed shorter if desired.
- 4 Connect the O2 sensor cables to the Autotune Module. Input #1 on the back of the Autotune module refers to the vehicle's front or left cylinder and Cylinder #1 in the PCV software.
- 5 Connect the BLACK wire from the Autotune module to a good chassis ground using either one of the supplied Posi-taps or ring lug. The negative side of the battery is a good location.
- 6 Connect the RED wire of the Autotune module to a switched 12v source using the supplied Posi-tap. The power for the tail light is a good location. Most PCV install guides will tell you the wire color for this location. The Autotune can pull up to 5 amps while the sensors are warming up.
- 7 Block or disable the clean air injection system if applicable (see tech tips).

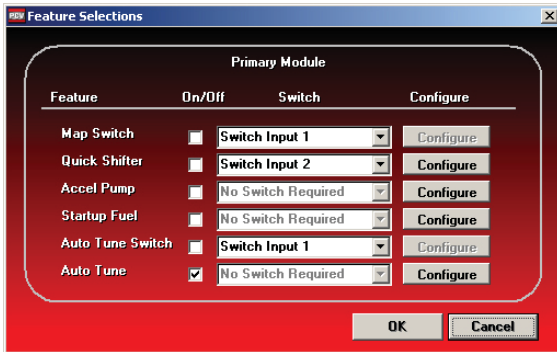


2 AUTOTUNE DUAL CHANNEL MODULE

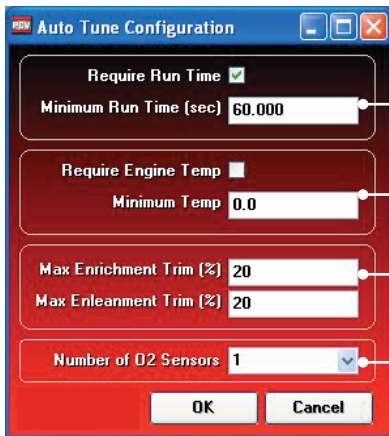
INSTALLATION GUIDE

USING AUTOTUNE

The Autotune kit when used in conjunction with the PCV, allows the bike to be automatically tuned to a target air/fuel ratio. To use this feature you must first enable Autotune in the PCV.



- 1 Click **Power Commander Tools >Configure >Features Enables and Input Selections** or press **CTRL+F**.
- 2 Check the box next to Auto Tune to enable the Autotune feature.
- 3 If you are using a switch to turn Autotune ON/OFF, check the box next to Auto Tune Switch.
- 4 Click **Configure** to adjust the Autotune settings.



- How much time after starting the engine the software waits until it starts sampling.
- The temperature the engine needs to reach before the software starts sampling (optional wiring needed to function).
- The maximum the software will trim per session.
- The number of O2 sensors.

Shows current table being altered

Engine Speed (RPM)	Throttle Position							
	0%	2%	5%	10%	15%	20%	40%	60%
500	0	0	0	0	0	0	0	0
750	0	13.2	13.2	13.2	13.2	0	0	0
1000	0	13.2	13.2	13.2	13.2	0	0	0
1250	0	13.2	13.2	13.2	13.2	13.2	13.2	13.2
1500	0	13.2	13.2	13.2	13.2	13.2	13.2	13.2
1750	0	13.2	13.2	13.2	13.2	13.2	13.2	13.2
2000	0	13.2	13.2	13.2	13.2	13.2	13.2	13.2
2250	0	13.2	13.5	13.5	13.5	13.5	13.2	13.2
2500	0	13.2	13.7	13.7	13.7	13.7	13.2	13.2
2750	0	13.2	13.7	13.7	13.7	13.7	13.2	13.2
3000	0	13.2	13.7	13.7	13.7	13.7	13.2	13.2
3250	0	13.2	13.7	13.7	13.7	13.7	13.2	13.2

Most maps from Dynojet will include a base Target AFR table. These settings are intended to deliver optimal performance while still maintaining decent fuel mileage in the cruise area (for most models).

- 5 To alter the AFR target click on **Target AFR** in the tree view.
- 6 Expand each cylinder and/or gear if necessary to view the corresponding table. If necessary type in different values in the cells. Multiple cells can be highlighted by using click/drag with the mouse.

It is recommended to load a base map into the PCV that best corresponds to your bikes current configuration. This will decrease the time in which it takes for the Autotune module to achieve its target air/fuel.

A switch can be wired into the PCV to be used to toggle between your base map and learning mode. Any SPST (open/close) type switch can be used. When the switch is OPEN the PCV will be running on the base map. When the switch is CLOSED the PCV will go into learn mode and Autotune will start making fuel trim adjustments.

You can toggle between these modes at any time. The values learned for the fuel trims will be saved if you toggle back to the base map.

- 7 After an Autotune riding session, click **Get Map** and view the Trim table by clicking on the respective table in the tree view section. This will display exactly where Autotune has made changes and how much.
- 8 Click **Map Tools >Auto Tune Tables >Accept All Trims** to accept these trims and transfer them into the base Fuel table. This will zero out the trim table(s) and add the trim values to the base map(s).
- 9 Click **Send Map**, after accepting the trims, to load the newly edited file into the connected PCV device.

The PCV is configured to only allow the software to trim +/- 20% until you manually accept the trims. You can alter these limits in the Auto Tune configuration. The more the PCV learns the lower you can make this value. By lowering this value it will work as a safety net so if something should go wrong in the unit or bike it will not cause the bike to run poorly.

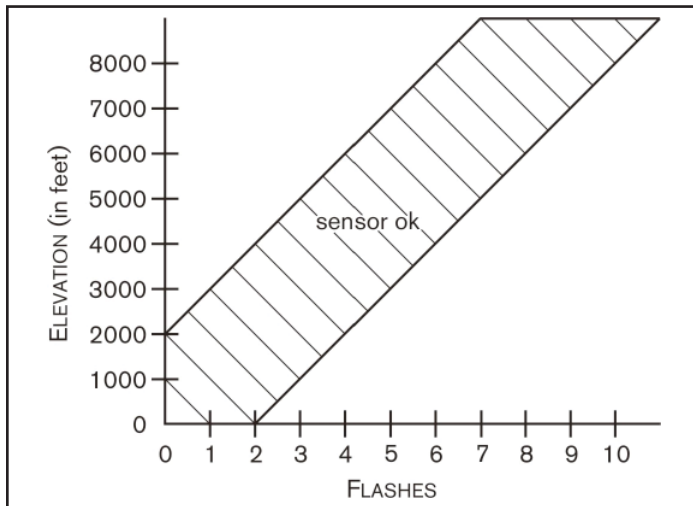
TECH TIPS

- If you should see abnormally high values in the trim tables (max enrichment or max enleanment) then check the following:
 - Intake leaks
 - Exhaust leaks - check at all exhaust junctions
 - Sensor condition - (see sensor test)
 - Make sure the clean air system is blocked (if applicable). Also called the PAIR valve, the clean air system draws fresh air out of the air box and dumps into the exhaust port to help ignite any unburnt fuel in the exhaust. This extra air will skew the AFR readings of the Autotune module.
- Dynojet does not recommend inputting values in the 0% column of the Target AFR tables. If you should need to tune the 0% column to combat popping on deceleration input values directly in the Fuel tables.
- If fuel mileage is a concern then you can alter the Target AFR values in the cruise range. Dynojet considers the cruise range to be around 5-20% throttle. Dynojet does not recommend making the bike any leaner than 14.7 in the Target AFR cells.
 - Dynojet has found that for the best compromise of fuel mileage and throttle response to set the cruise range to 13.7-14.0.
 - For all other ranges 12.8-13.4 seems to work best. For the best results it is recommended to bring the bike to an Authorized Tuning Center to have them verify the AFR values.
- Make sure the sensor is not dropped or subjected to wet conditions. The O2 sensors used in this kit are a Bosch unit and do not come with any warranty.
- To verify that Autotune is working, you should see a real time AFR reading in the lower right hand corner of the PCV software after the engine has been running for at least a minute.
 - An AFR value of 9.99 could indicate a faulty sensor or the sensor is wired incorrectly to the module. It is normal to see an AFR value of 9.99 for about the first 30 seconds of run time, while the sensor is being heated up.
 - An AFR value of 0.00 could indicate a firmware problem, or that Autotune has not been enabled in the software, or that Autotune configurations are not currently allowing Autotune to sample. This could also indicate a problem in the CAN bus, such as a damaged or loose CAN link cable or a missing CAN termination plug.
Note: Newer Autotune modules with a serial number starting with 15 or higher, do not come with CAN termination plugs supplied and do not require a CAN termination plug.

- The “Autotune Running” light in the PCV software will illuminate, only when the following conditions have been met:
 - You are currently running in an RPM/throttle position cell that has a valid Target AFR value specified. This means that if you are currently idling and there is not a valid Target AFR specified in the idle range of the Target AFR table, the light will stay off.
 - Your run time and/or engine temperature configurations have been met. This means that if you are requiring run time or engine temp for Autotune to be active, you must have been running for the specified period of time, and/or there is an Engine Temperature channel stream enabled and configured and the current engine temperature is above your specified set point.
 - The circuit of your Autotune Switch (if enabled) is currently closed. This means if the feature is enabled and the switch circuit is open, Autotune will not come on.
 - You have an AFR signal streaming into the PCV module from the Autotune module that is within 11.5 – 15.0 AFR. You should see an AFR gauge in the main screen of the PCV software.

02 SENSOR TEST

The Autotune kit has a built in circuit which allows you to test the sensor accuracy and condition.



- 1 Remove the sensors from the exhaust system and hold in ambient air.
- 2 Verify the Autotune kit has been powered up for at least one minute. The faceplate light should be lit solid. The sensors should be warm to the touch.
- 3 Press and hold the function button on the front of the Autotune kit for three seconds and release the button.

The LED light will blink fast single blinks for sensor one, pause for a moment, and then begin to flash.
- 4 Count the number of flashes and refer to the chart. This is the test result for sensor #1 only.
- 5 Initiate the test again to test the second sensor.
- 6 Press and hold the function button on the front of the Autotune kit for three seconds and release the button.

The LED light will blink fast double blinks for sensor two, pause for a moment, and then begin to flash.
- 7 Count the number of flashes and refer to the chart. This is the test result for sensor #2 only.
- 8 Repeat the sensor test if there is any question as to the purity of the air during the test. Replace the sensor if the condition test gives a test result that falls outside of the “Sensor OK” range shown1

A value of 0.00 could indicate that the Autotune has not been enabled in the software.



PUSH THE LIMIT

2191 MENDENHALL DRIVE, NORTH LAS VEGAS, NV 89081 - 800-992-4993 - DYNOJET.COM

© 2011-2020 DYNOJET RESEARCH ALL RIGHTS RESERVED